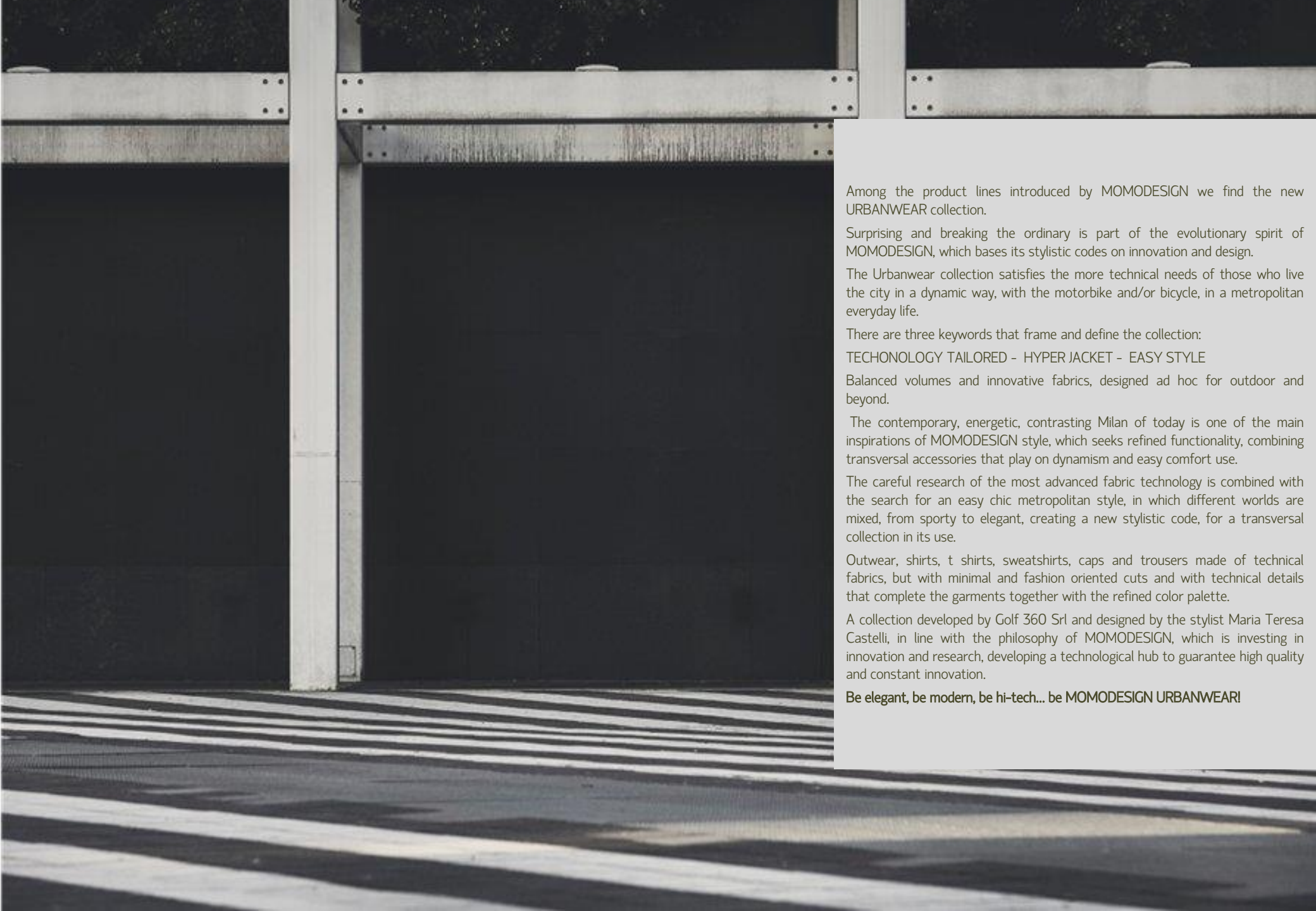


MOMODESIGN

WOMAN'S
S/S 2022
COLLECTION

URBANWEAR

technology tailored



Among the product lines introduced by MOMODESIGN we find the new URBANWEAR collection.

Surprising and breaking the ordinary is part of the evolutionary spirit of MOMODESIGN, which bases its stylistic codes on innovation and design.

The Urbanwear collection satisfies the more technical needs of those who live the city in a dynamic way, with the motorbike and/or bicycle, in a metropolitan everyday life.

There are three keywords that frame and define the collection:

TECHONOLOGY TAILORED - HYPER JACKET - EASY STYLE

Balanced volumes and innovative fabrics, designed ad hoc for outdoor and beyond.

The contemporary, energetic, contrasting Milan of today is one of the main inspirations of MOMODESIGN style, which seeks refined functionality, combining transversal accessories that play on dynamism and easy comfort use.

The careful research of the most advanced fabric technology is combined with the search for an easy chic metropolitan style, in which different worlds are mixed, from sporty to elegant, creating a new stylistic code, for a transversal collection in its use.

Outwear, shirts, t shirts, sweatshirts, caps and trousers made of technical fabrics, but with minimal and fashion oriented cuts and with technical details that complete the garments together with the refined color palette.

A collection developed by Golf 360 Srl and designed by the stylist Maria Teresa Castelli, in line with the philosophy of MOMODESIGN, which is investing in innovation and research, developing a technological hub to guarantee high quality and constant innovation.

Be elegant, be modern, be hi-tech... be MOMODESIGN URBANWEAR!

PROGETTO
GRAPHENE™
INSIDE THE FUTURE

GRAPHENE™



Graphene is the new textile material that will change the way to make garment.

The unique properties of graphene, such as the thermal conductivity, electrostatic, lightness and antibacterial, make it an interesting material for different application.

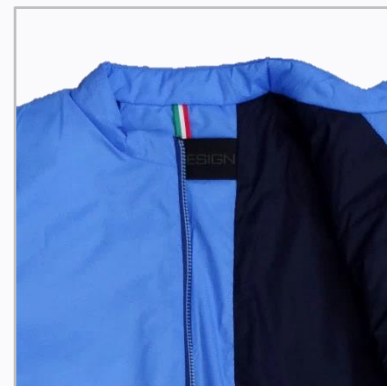
Graphene is an innovative nanotech soft and light material, characterized by high conductive capacities that care the regulation of body temperature.

The warm in hot weather conditions is dispersed, while in the presence of low cold temperatures it is equally distributed stabilizing inside temperature.



OUTWEAR

PORTOFINO — MD-JKW2101



PORTOFINO — MD-JKW2101

The lightweight PORTOFINO down jacket is made with Italian DWR-treated fabrics and 80 gr Valtherm padding.

With a simple and clean design, without a hood and with a low crew neckline, this garment guarantees maximum comfort and maximum versatility for an always fashionable look.

The garment also features sophisticated customizations and technical finishes, such as the front double-slider zip with blue chain and gray ribbon and the zip pockets in the same tone. The garment is completed by the reflex strip with lasered logo on the back.

Features:

- DWR Made in Italy fabrics
- Double slider front zip with blue chain and gray ribbon
- 2 external zip pockets with blue chain and gray ribbon
- Personalized zipper pulls
- Reflex stripe with logo on the back
- 3 possible color variations

Tech specs:

- Sizes: S – M – L – XL – XXL
- Content:
 - ❖ Outside: 100% PA – Italian fabric 
 - ❖ Wadding: 100% PA – Italian fabric 
 - ❖ Lining: 100% PA – Italian fabric 
- Made in Europe 



Colors:



LIGHT BLUEE
/ NAVY



MILITARY
GREEN. /
BEIGE



BLACK

HARVARD — MD-JKW2102



HARVARD — MD-JKW2102

HARVARD is a blazer made with DWR Made in Italy fabrics . The 45 gr ultra light padding is suitable for maintaining good thermal comfort in spring or on cool summer days. The design of this garment allows for versatile use, both on professional occasions and in leisure time.

The garment is completed by sophisticated customizations and technical finishes, such as the front single-slider zip with chain and military green ribbon, the zip of the internal pocket with a repeated logo and the exclusive MOMODESIGN snap button on the collar.

In addition, the external pockets have comfortable invisible zips and there is, as in all the items in the collection, the reflex strip on the back with lasered logo.

Features:

- DWR Made in Italy fabrics
- 45 gr. wadding
- Single-slider front zip with military green ribbon and chain
- 2 external pockets with invisible zip
- Internal pocket zip with repeated logo
- Personalized zipper pull
- Snap MOMODESIGN
- Reflex stripe with logo on the back
- 3 possible color variations

Tech specs:

- Sizes: S – M – L – XL – XXL
- Content:
 - ❖ Outside: 100% PA – Italian fabric 
 - ❖ Wadding: 100% PA – Italian fabric 
 - ❖ Lining: 100% PA – Italian fabric 
- Made in Europe 



Colors:



MILITARY
GREEN



NAVY /
LIGHT BLUE



BLACK

LAHAUR — MD-JKW2103



LAHAUR – MD-JKW2103

The LAHAUR jacket is a field jacket unlined and without padding.

This garment made of an Italian DWR fabric, available in three colors, is characterized by an iridescent effect, which gives it a modern and elegant look.

The garment is characterized by customized details and technical finishes, such as the double-slider graphite zip, the multiple pockets, one with a black waterproof zip with logo and the MOMODESIGN snaps on the front.

Also present the cuff with stud on the left wrist and the reflex strip with lasered logo on the back.

Features:

- External DWR Made in Italy fabric
- Double-slider front graphite zip
- 3 external pockets, one with black waterproof zip with logo
- Personalized zipper pulls
- Reflex stripe with logo on the back
- Exclusive stud with logo on the wrist
- 3 possible color variations

Tech specs:

- Sizes: S – M – L – XL – XXL
- Content:
 - ❖ 43% VI – 40% PU – 9% PL – 3% ME – 5% AF 
 - ❖ Made in Europe 



BREATHABLE
FABRIC



WATER
RESISTANT

Colors:



BEIGE



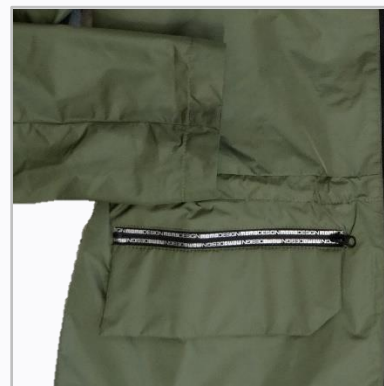
PINK



BLUE

HANOI — MD-JKW2104

GRAPHENE™
INSIDE THE FUTURE




HANOI – MD-JKW2104

The HANOI jacket takes inspiration from the shells of the Momodesign collections and has been made in the sophisticated fabric with a graphene membrane. Available in four colors, it is particularly suitable for trips out of town, thanks to the characteristics of Graphene which provides complete isolation of the body from external atmospheric agents, always maintaining the correct body temperature. The garment features sophisticated customizations and technical finishes, such as the double-slider graphite front zip, the waterproof zip with logo for the pocket and the drawstring at the waist with silicone stopper so as to give the garment a sporty but always fashionable look. The left cuff with ultralight metal stud and the reflex stripe with lasered logo on the back complete the look.

Features:

- DWR fabric with graphene membrane
- Double-slider front zip in graphite
- 3 external pockets, one with logoed waterproof zip
- Personalized zipper pulls
- Drawstring waist with silicone stopper
- Reflex stripe with logo on the back
- 4 possible color variations

Tech specs:

- Sizes: S – M – L – XL – XXL
- Content:
 - ❖ 99% NY – 1% GRAPHENE
- Made in Europe 



Colors:



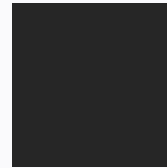
MILITARY
GREEN



RED



NAVY



DARK GREY

SEATTLE — MD-JKW2105



SEATTLE – MD-JKW2105

SEATTLE is a trench coat that combines style and technical fabrics.

It is made both in an Italian fabric with silver checkering and in a solid color Italian technical fabric. Both are WR treated fabrics able to make the garment waterproof.

The two spacious external pockets, the wide collar and the fabric belt at the waist complete the garment making it elegant and fashionable.

The trench coat also features sophisticated customizations and technical finishes, such as the double-slider graphite front zip and the black MOMODESIGN reflex print applied on the chest.

Furthermore, the classic studded cuff is not missing.

Features:

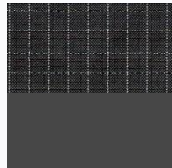
- Italian WR fabrics
- 2 versions in silver Ripstop and 2 in solid color
- Double-slider front zip in graphite
- 2 external pockets without zip
- Personalized zipper pulls
- MOMODESIGN reflex print on the chest
- Fabric belt at the waist
- Exclusive stud with logo on the wrist
- 4 possible color variations

Tech specs:

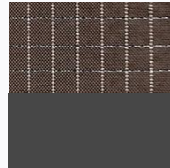
- Sizes: S – M – L – XL – XXL
- Content:
 - ❖ Outside V.1: 98% PL – 2% PA – Italian fabric 
 - ❖ Outside V.2: 100% PA – Italian fabric 
 - ❖ Lining: 100% PA – Italian fabric 
- Made in Europe 



Colors:



GREY /
DARK GREY



BEIGE /
DARK GREY



NAVY /
DARK GREY



BLACK /
GREY
SCURO

CARDIFF — MD-JKW2106



CARDIFF — MD-JKW2106

CARDIFF is a waterproof jacket, thanks to the DWR treatment applied to the fabric.


Innovation, fashion trend and comfort in a single garment enriched by MOMODESIGN details and customizations, such as the front zip with personalized zipper pull and the rubber label on the back.

Two comfortable side pockets with zip complete the garment; moreover, thanks to the compact size, it is ideal to always carry with you.

Features:

- Italian DWR fabric
- Color matched single-slider front zip
- Two side pockets with zip
- Personalized zipper pull
- MOMODESIGN rubber label
- 2 possible color variations

Tech specs:

- Sizes: S – M – L – XL – XXL
- Content:
 - ❖ 100% PA
- Made in Europe 



Colors:



NAVY



BLACK



SWEATSHIRTS

BUENOS AIRES — MD-FLW2101



STRETCHY

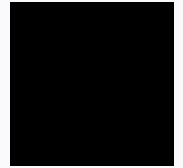
Colors



NAVY



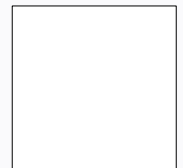
GREY



BLACK



RED



WHITE

BUENOS AIRES is a boxy cut sweatshirt with three-quarter sleeves and is made of Italian viscose blend fabric.



The minimal lines make the garment extremely versatile and functional.

The MOMODESIGN reflex print on the bottom and the reflex ribbon with logo on the neck characterize this sweatshirt. Five possible color variants.

Features:

- Italian viscose blend fabric
- MOMODESIGN silver reflex print
- Reflex tape on the neck
- 5 possible color variations

Tech specs:

- Sizes: S – M – L – XL – XXL
- Content:
 - ❖ 67% VI – 29% PA – 4% EA – Italian fabric 
- Made in Europe 

Colors:

- NAVY
- GREY MELANGE
- BLACK
- RED
- WHITE

DUSSELDORF — MD- FLW2102



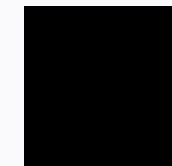
STRETCHY



GREY



NAVY



BLACK



RED



WHITE



Colors

The DUSSELDORF sweatshirt is made with Italian viscose blend fabric able to give the garment comfort and versatility. The oversized line guarantees maximum comfort and the details present, such as the MOMODESIGN reflex print on the bottom and the reflex ribbon with logo on the neck, complete the look.

Features:

- Italian viscose blend fabric
- MOMODESIGN reflex print
- Reflex tape on the neck
- 5 possible color variations

Tech specs:

- Sizes: S – M – L – XL – XXL
- Content:
 - ❖ 67% VI – 29% PA – 4% EA – Italian fabric 
- Made in Europe 

Colors:

- GREY MELANGE
- NAVY
- BLACK
- RED
- WHITE.

DURBAN — MD- FLW2103



The DURBAN sweatshirt takes up the same line as the BUENOS AIRES sweatshirt.


The stretch fabric of European origin is treated with Microfresh® technology, which makes it remarkably breathable.

The MOMODESIGN reflex print is applied to the bottom of the sweatshirt, while a reflex logoed ribbon is applied to the back neckline.

Features:

- Microfresh® technical European fabric
- MOMODESIGN reflex print
- Reflex tape on the neck

Tech specs:

- Sizes: S – M – L – XL – XXL
- Content:
 - ❖ Fabric: 93% PA – 7% EA – Made in Europe 
- Made in Europe 

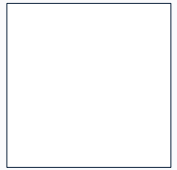
Colors:

- WHITE/GREY INSIDE

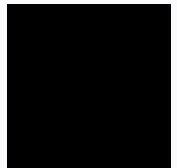


T-SHIRT

LA HABANA – MD-TSW2101A



WHITE




BLACK

Colors

Features:

- Fabric in 100% cotton
- MOMODESIGN anthracite foil
- Iron-on brand label
- 2 possible color variations

Tech specs:

- Sizes: S – M – L – XL – XXL
- Content:
 - ❖ 100% CO
- Made in Europe 

Colors:

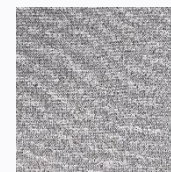
- WHITE
- BLACK

The LA HABANA t-shirt has been designed with a soft fit and is made of 100% cotton fabric.

The anthracite MOMODESIGN foil, placed on the side, characterizes the look.

The T-shirt is available in two colors.

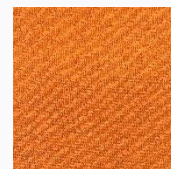
VARADERO – MD-TSW2101B



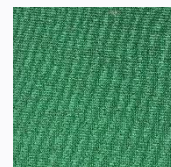
GREY



BLUETTE



ORANGE





GREEN

Colors

Features:

- Microfresh® technical European fabric
- MOMODESIGN anthracite foil
- Iron-on brand label
- 4 possible color variations

Tech specs:

- Sizes: S – M – L – XL – XXL
- Content:
 - ❖ 100% PL – European Fabric 
- Made in Europe 

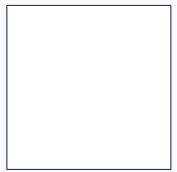
Colors:

- GREY MELANGE
- BLUETTE
- ORANGE
- GREEN

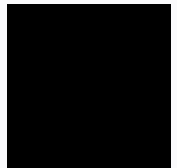
The VARADERO t-shirt has been designed with a soft fit and is made of Microfresh® technical European fabric, representing the more technical variant of the LA HABANA t-shirt.

The anthracite MOMODESIGN foil, placed on the side, characterizes the look. The T-shirt is available in four possible colors.

CARACAS— MD-TSW2102A



WHITE




BLACK

Colors

Features:

- Fabric in 100% cotton
- MOMODESIGN anthracite foil
- Iron-on brand label
- 2 possible color variations

Tech specs:

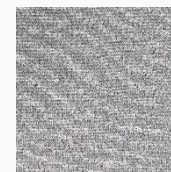
- Sizes: S – M – L – XL – XXL
- Content:
 - ❖ 100% CO
- Made in Europe 

Colors:

- WHITE
- BLACK.

The CARACAS tank top is in 100% cotton fabric, features the anthracite MOMODESIGN foil, applied vertically on the side like the other t-shirts of the group and is designed to have a soft fit. The garment is available in two color variations.

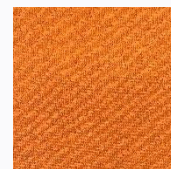
MARACAIBO — MD-TSW2102B



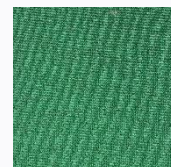
GREY



BLUETTE



ORANGE





GREEN

Colors

Features:

- Microfresh® technical European fabric
- MOMODESIGN anthracite foil
- Iron-on brand label
- 4 possible color variations

Tech specs:

- Sizes: S – M – L – XL – XXL
- Content:
 - ❖ 100% PL- European Fabric 
- Made in Europe 

Colors:

- GREY MELANGE
- BLUETTE
- ORANGE
- GREEN

The MARACAIBO tank top is made of European fabric to which Microfresh® technology has been applied. It too features the anthracite MOMODESIGN foil, applied vertically on the side like the other t-shirts of the group and has a soft fit. Available in four colors.

BEVERLY HILLS — MD- TSW2103



Colors



BEVERLY HILLS is a crop top, with an American cut shoulder, made of Italian tubular stretch fabric.

The seamless, comfortable and versatile garment is suitable for everyday use. The tank top is available in six colors and is proposed in "one size fits all".

The look is completed by the screen printing with the logo on the back neckline and the thermo-adhesive brand label.

Features:

- Italian tubular stretch fabric
- Logo screen printing on the back neckline
- Iron-on brand label
- 6 possible color variations

Tech specs:

- Sizes: S – M – L – XL – XXL
- Content:
 - ❖ 92% PA – 8% EA – Italian fabric 
- Made in Europe 

Colors:

- CYCLAMEN
- BLACK
- NAVY
- MILITARY GREEN
- WHITE
- NUDE.

SANTA MONICA – MD-TSW2104



Colors



SANTA MONICA is a tank top made of Italian tubular stretch fabric. The seamless, comfortable and versatile garment is suitable for everyday use. The tank top is available in six colors and is proposed in "one size fits all".

The look is completed by the screen printing with the logo on the back neckline and the thermo-adhesive brand label.

Features:

- Italian tubular stretch fabric
- Logo screen printing on the back neckline
- Iron-on brand label
- 6 possible color variations

Tech specs:

- Sizes: S – M – L – XL – XXL
- Content:
 - ❖ 92% PA – 8% EA – Italian fabric 
- Made in Europe 

Colors:

- CYCLAMEN
- BLACK
- NAVY
- MILITARY GREEN
- WHITE
- NUDE.



PANTS

DELFT — MD- PNW2101



DELFT is a comfortable, versatile and sporty leggings in Italian viscose blend fabric. The trousers have stitching on the front that simulate pockets, while the back pockets are functional. The minimal reflex print on the right back pocket completes the look. Five color variants.



GREY



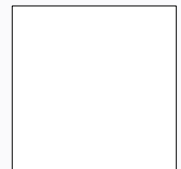
NAVY



BLACK



RED



WHITE

Colors

Features:

- Italian viscose blend fabric
- 2 fake front pockets and 2 working rear pockets
- MOMODESIGN reflex print back
- Iron-on brand label
- 5 possible color variations

Tech specs:

- Sizes: S – M – L – XL – XXL
- Content:
 - ❖ 67% VI – 29% PA – 4% EA – Italian fabric 
- Made in Europe 

Colors:

- GREY MELANGE
- NAVY
- BLACK
- RED
- WHITE

CANBERRA — MD- PNW2102



STRETCHY

CANBERRA is a sporty trousers in Italian viscose blend fabric, comfortable, versatile and sporty.

The trousers have four functional pockets; the MOMODESIGN reflex print on the bottom of the leg completes the look.

The drawstring at the waist and silicone stopper guarantees maximum comfort.

Five color variants.



NAVY



GREY



BLACK



RED




WHITE

Colors

Features:

- Italian viscose blend fabric
- 4 pockets
- MOMODESIGN reflex print
- Drawstring at the waist
- Iron-on brand label
- 5 possible color variations

Tech specs:

- Sizes: S – M – L – XL – XXL
- Content:
 - ❖ 67% VI – 29% PA – 4% EA – Italian fabric 
- Made in Europe 

Colors:

- NAVY
- GREY MELANGE
- BLACK
- RED
- WHITE.



ACCESSORIES

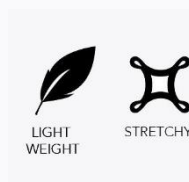
BOSTON — MD-BH2001



BOSTON is a unique hat, inspired by one of the undisputed capitals of baseball, created in the exclusive patented One Touch technique, in which the shell is totally seamless.

Made of breathable stretch fabric and lined, even without rear adjustment fits almost all head sizes.

The cap is customized with metal front and back applications.



Features:

- Cap with One Touch seamless technology
- Front and rear metal applications
- Unique shell that adapts to different sizes thanks to the stretch fabric
- Internal printed logo label

Tech specs:

- Sizes: One fits all
- Content:
 - ❖ 100%PL
- Made in China

Colors:

- GREY

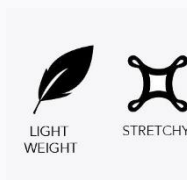
CHICAGO — MD-BH2002



CHICAGO is a unique hat, inspired by one of the undisputed capitals of baseball, made in the exclusive patented One Touch technique, in which the shell is totally seamless.

Made of breathable stretch fabric and lined, even without rear adjustment fits almost all head sizes.

The cap is personalized with a rich front embroidery and a rubberized back application.



Features:

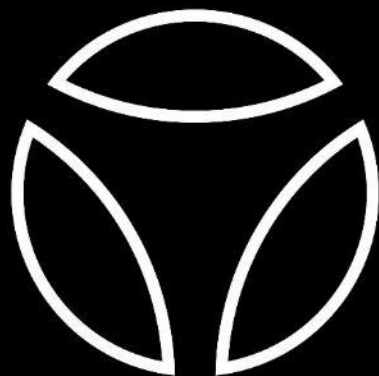
- Cap with One Touch seamless technology
- Front embroidery
- Back rubberized application
- Unique shell that adapts to different sizes thanks to the stretch fabric
- Internal printed logo label

Tech specs:

- Sizes: One fits all
- Content:
 - ❖ 100%PL
- Made in China

Colors:

- BLACK



GOLF@360 Srl

OFFICIAL WORLDWIDE URBANWEAR LICENSEE

Registered Offices: Via Larga, 8 – 20122 – Milano (MI) - Italy

Headquarters and Showroom: Via Montale 1/b – 22070 – Bulgarograsso (CO) - Italy

Email: info@golf360.it – Website: www.golf360.it – Tel.: +39.031.9349210

VAT #: IT07362730967 – REA Milano: 1953422

WWW.MOMODESIGN.COM