


MOMODESIGN

MAN'S
S/S 2021
COLLECTION

URBANWEAR

technology tailored



An Urbanwear collection that combines the more technical needs of those who live the city in a dynamic way, with motorcycles and / or bicycles, with metropolitan daily life.

Three keywords that frame the Fall / Winter 20-21 collection: TECHNOLOGY TAILORED - DYNAMIC - EASY STYLE.

Balanced volumes and innovative fabrics, designed specifically for the outdoors and beyond.

The careful research of the most advanced technologies in fabrics is combined with the search for an easy chic metropolitan style, where the contaminations between different worlds, from sporty to elegant, mix together creating a new stylistic code, for a transversal collection in its use. .

Be elegant, be modern, be hi-tech... be MOMODESIGN URBANWEAR!

PROJECT
GRAPHENE™
INSIDE THE FUTURE

GRAPHENE™



Graphene is the new textile material that will change the way to make garment.

The unique properties of graphene, such as the thermal conductivity, electrostatic, lightness and antibacterial, make it an interesting material for different application.

Graphene is an innovative nanotech soft and light material, characterized by high conductive capacities that care the regulation of body temperature.

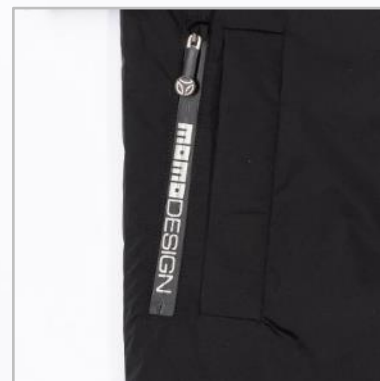
The warm in hot weather conditions is dispersed, while in the presence of low cold temperatures it is equally distributed stabilizing inside temperature.



OUTWEAR
ALL SEASONS

TORONTO — MD-JK2001

GRAPHENE™
INSIDE THE FUTURE



COLORS



BLACK



NAVY



CAMEL

TORONTO – MD-JK2001

GRAPHENE™
INSIDE THE FUTURE

The TORONTO long jacket has been designed to provide unique thermal insulation. Thanks to Graphene wadding, it is suitable for harsh winter climates, without sacrificing "hyper" lightness and comfort.

The Italian outer fabric is DWR treated to resist water.

To adapt the jacket to your look, hoods are available in different colors, interchangeable and sold separately.

Multiple custom details and cutting-edge technical finishes, such as the graphite zipper and the waterproof pocket with logo, make this jacket the icon of the MOMODESIGN URBANWEAR collection for all seasons.

Features:

- Italian outer fabric
- Graphene padding for maximum thermal insulation of the body
- Transparent internal window
- Removable and interchangeable hood in various colors with reflex print
- Logo print on the placket
- 3 external pockets, one with waterproof zipper with logo
- 1 inside pocket with zipper
- Double slider front zipper in graphite
- Personalized zipper pullers and snaps
- Exclusive stud with logo on the wrist
- 3 possible color variants

Tech specs:

- Sizes: S – M – L – XL – XXL
- Content:
 - ❖ Outside - 92% PA 8% EA - Italian fabric 
 - ❖ Wadding – 99% PL 1% Graphene
 - ❖ Ripstop lining – 100%NY
 - ❖ Window – 100% PU
 - ❖ Hood: 92% PA 8% EA + 100% NY
- Made in Europe 

Colors:

- BLACK with GRAY lining
- CAMEL with GRAY lining
- NAVY with GRAY lining

Colors of hood:

- BLACK + BLACK
- BLACK + YELLOW
- BLACK + MILITARY GREEN
- CAMEL + CAMEL
- NAVY + NAVY



WATER
RESISTANT



BREATHABLE
FABRIC



STOCKHOLM – MD-JK2002

GRAPHENE™
INSIDE THE FUTURE



COLORS



BLACK



NAVY



CAMEL

STOCKHOLM – MD-JK2002

The STOCKHOLM jacket has been designed to provide unique thermal insulation. Thanks to the Graphene wadding, it is suitable for cold winter climates, without giving up a "hyper" lightness and comfort.

The Italian outer fabric is DWR treated to resist water.

It represents the younger and more dynamic version of the TORONTO.

To adapt the jacket to your look, hoods are available in different colors, interchangeable and sold separately.

Multiple customized details and cutting-edge technical finishes, such as the graphite zipper and the waterproof pocket with logo, make this jacket the icon of the MOMODESIGN URBANWEAR collection for all seasons.

Features:

- Italian outer fabric
- Graphene padding for maximum thermal insulation of the body
- Transparent internal window
- Removable and interchangeable hood in various colors with reflex print
- Logo print on the placket
- 3 external pockets with waterproof zips, 1 of them with logo
- 1 inside pocket with zipper
- Double slider front graphite zipper
- Personalized zipper pullers and snaps
- Exclusive stud with logo on the wrist
- 3 possible color variants

Tech specs:

- Sizes S – M – L – XL – XXL
- Content:
 - ❖ Outside - 92% PA 8% EA - Italian fabric 
 - ❖ Wadding – 99% PL 1% Graphene
 - ❖ Ripstop lining – 100%NY
 - ❖ Window – 100% PU
 - ❖ Hood: 92% PA 8% EA + 100% NY
- Made in Europe 

Colors:

- BLACK with GRAY lining
- CAMEL with GRAY lining
- NAVY with GRAY lining

Colors of hood:

- BLACK + BLACK
- BLACK + YELLOW
- BLACK + MILITARY GREEN
- CAMEL + CAMEL
- NAVY + NAVY



PARIS - MD-JK2003A




PARIS – MD-JK2003A

The PARIS long coat offers an elegant and practical look for strolling along the Seine, as well as in the centers of modern cities. The fabric is in soft and stretch soft-shell, of Japanese origin, which combines maximum comfort of fit with the warm feeling of fleece inside. The garment features unique customizations and cutting-edge technical finishes, such as the front graphite zipper and the customized waterproof pocket. The hood with embossing logo and drawstring with silicone stopper and the glasses-holder ribbon with tricolor detail complete the garment.

Features:

- Stretch soft-shell fabric with fleece inside to give warmth and comfort
- 3 external pockets, 1 with waterproof logo zipper
- 1 inside pocket with zipper
- Double slider front zipper in graphite
- Personalized zipper pullers and snaps
- Internal glasses holder with tricolor ribbon
- Hood with embossing logo
- Hood drawstring with silicone stopper
- Exclusive stud with logo on the wrist
- 2 possible color variants

Tech specs:

- Sizes: S – M – L – XL – XXL
- Content:
 - ❖ 86%PL 14%PU
- Made in Europe 

Colors:

- BLACK with BLACK fleece



WATER
RESISTANT

Water column: 20,000 mm



BREATHABLE
FABRIC

Breathability: 15,000 gr / m² / 24h

SOFIA - MD-JK2004



SOFIA – MD-JK2004

SOFIA is a dynamic jacket for those who want to experience a city divided between classicism and progress.

The fabric is in soft and stretch soft-shell of Japanese origin, which combines maximum comfort of fit with the warm feeling of fleece inside.

The garment features unique customizations and cutting-edge technical finishes, such as the front graphite zipper and three waterproof pockets, one of them with logo.

The garment is completed by the two large internal pockets in Lycra Sensitive® and a goggle strap with tricolor detail.

Features:

- Stretch soft-shell fabric with fleece inside to give warmth and comfort
- 2 external pockets with waterproof zips, 1 of them with logo
- 2 large internal pockets in Sensitive® mesh lycra
- Double slider front zipper in graphite
- Personalized zipper pullers and snaps
- Internal glasses holder with tricolor ribbon
- Exclusive stud with logo on the wrist
- 2 possible color variants

Tech specs:

- Sizes: S – M – L – XL – XXL
- Content:
 - ❖ 86%PL 14%PU
 - ❖ Pockets : 72%PA 28%EA - Italian Fabri 
- Made in Europe 

Colors:

- BLACK with BLACK fleece

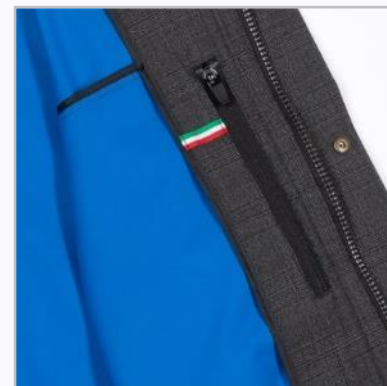


Water column: 20,000 mm



Breathability: 15,000 gr / m2 / 24h

LONDON - MD-JK2003B



LONDON – MD-JK2003B

The LONDON long coat is the revisited version of the classic City wool coat.

The Italian fabric in 100% wool has been internally coated with a waterproof and breathable membrane, to effectively counteract the rain and wind, typical of the British climate.

The garment features unique customizations and cutting-edge technical finishes, such as the front graphite zipper, the personalized waterproof pocket and a goggle strap with tricolor detail.

Features:

- 100% wool external fabric with internal waterproof and breathable membrane
- 3 external pockets, 1 with waterproof logo zipper
- 1 inside pocket with zipper
- Double slider front graphite zipper
- Personalized zipper pullers and snaps
- Internal glasses holder with tricolor ribbon
- Exclusive stud with logo on the wrist
- 3 possible color variants

Tech specs:

- Sizes: S – M – L – XL – XXL
- Content:
 - ❖ 54%PL 44%WO 2%EA - Italian fabric 
- Made in Europe 



WATER
RESISTANT

Water column: > 15.000 mm



BREATHABLE
FABRIC

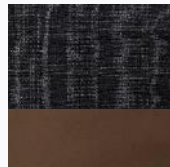
Colors:



GRAY /
ROYAL

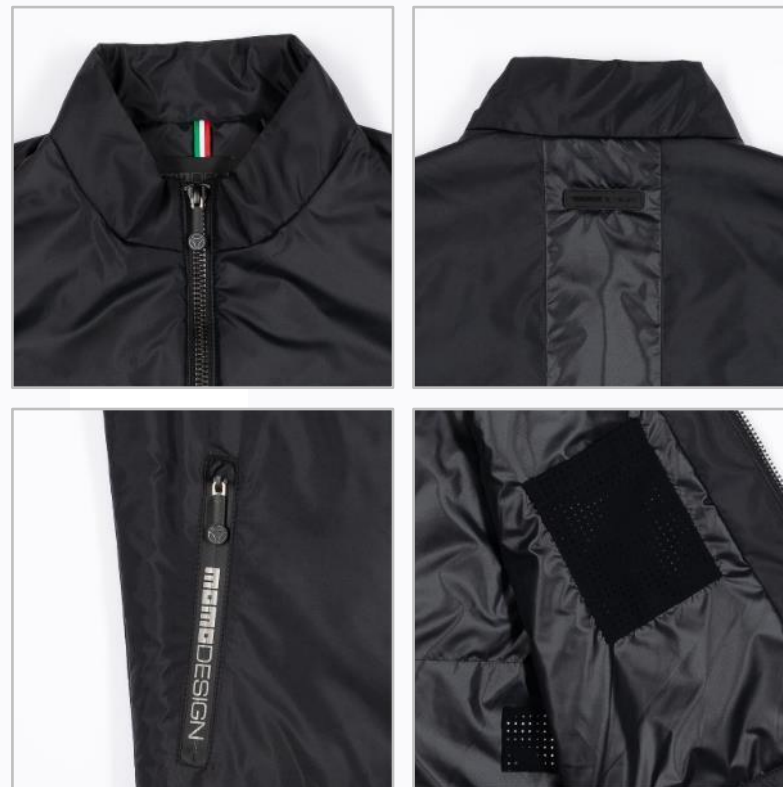


NAVY /
NAVY



DARK
GRAY /
COGNAC6

PERTH — MD-VE2001



PERTH is a sleeveless, light and versatile down jacket, for all seasons, from anywhere, alone or as under a jacket.

The DWR treated outer fabric guarantees insulation from rain and wind.

The garment features unique customizations and cutting-edge technical finishes, such as the front graphite zipper and 2 waterproof pockets, 1 of them with logo.



The garment is completed by the exclusive rubberized label on the back and the internal pocket in Lycra Sensitive®.



Features:

- Waterproof DWR fabric
- 2 external pockets with waterproof zips, 1 of them with logo
- Internal pocket in lycra Sensitive® for phone
- Double slider front graphite zipper
- Custom zipper pullers
- Rubberized label on the back

Tech specs:

- Sizes: S – M – L – XL – XXL
- Content:
 - ❖ Outside: 100%PA
 - ❖ Wadding: 100%PL
 - ❖ Lining: 100%PA
 - ❖ Pockets: 72%PA 28%EA - Italian Fabri 
- Made in Europe 

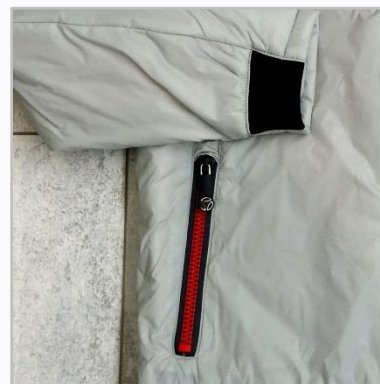
Colors:

- BLACK with BLACK lining



**PADDED
OUTERWEAR**

OXFORD - MD-JK2101



OXFORD – MD-JK2101

OXFORD is a light down jacket with biker collar, available in two colors.

The garment is characterized by a houndstooth print fabric on the back, in the internal profiles and on the inside pocket. The red PU MOMODESIGN print applied to the back gives the garment a youthful and modern air. The waterproofing of the garment is given by the DWR treatment applied to both the outer fabric and the lining; both fabrics are of Italian origin. The 80 g Valtherm wadding guarantees the right warming of the body in spring or on cool summer evenings.

The double slider front zipper and the zips of the side pockets with red chain and gray ribbon, match the colors of this garment. Finally, there is no lack of MOMODESIGN customizations in the automatic and zip pullers.

Features:

- Italian DWR fabrics
- Double slider front zipper with colored ribbon and chain
- Two external zips pockets with colored ribbon and chain
- Internal pocket in printed fabric
- Custom zipper pullers
- Automatic MOMODESIGN
- MOMODESIGN print in PU on the back
- 2 possible color variants

Tech specs:

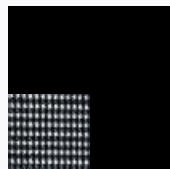
- Sizes: S – M – L – XL – XXL
- Content:
 - ❖ Outside: 100% PA – Italian fabric
 - ❖ Wadding: 100% PA – Italian fabric
 - ❖ Lining: 100% PA – Italian fabric
 - ❖ Inserts: 100% PL – Italian fabric
- Made in Europe 



Colors:



GRAY /
PIED-DE-POULE /
ORANGE



BLACK /
PIED-DE-POULE /
BLACK

BUCURESTI - MD-JK2106



BUCURESTI – MD-JK2106

BUCURESTI is a light down jacket characterized by ultra light 45 gr Valtherm wadding, present inside.

The Italian outer fabric is available in the variant with a silver motif, which gives this coat an elegant look, or in the sportier solid color variant with a DWR-treated fabric able to make the garment waterproof. The lining, also Italian, is treated with DWR, thus ensuring insulation from wind and rain.

The lacing takes place through customized automatic, of which only the first is visible; the garment is completed by the MOMODESIGN silver reflex print on the back and 3 pockets, one on the chest and two on the side, closed by customized snaps.

Features:

- Italian outer fabric WR
- Italian DWR lining
- Three external pockets
- Automatic MOMODESIGN
- MOMODESIGN silver reflex print on the back
- 4 color variants

Tech specs:

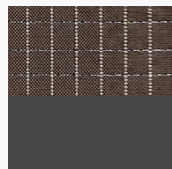
- Sizes: S – M – L – XL – XXL
- Content:
 - ❖ Outside V.1: 98% PL – 2% PA – Italian fabric 
 - ❖ Outside V.2: 100% PA – Italian fabric 
 - ❖ Padding: 100% PA – Italian fabric 
 - ❖ Lining: 100% PA – Italian fabric 
- Made in Europe 



Colors:



GRAY / DARK GRAY



BEIGE / DARK GRAY



NAVY / DARK GRAY

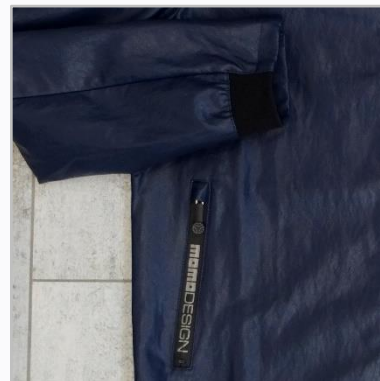


BLACK / DARK GRAY



OUTWEAR
SLIGHT

LOS ANGELES - MD-JK2102



LOS ANGELES – MD-JK2102

LOS ANGELES is an outerwear with biker fastening at the neck, made of eco-leather, and available in three possible colors.

The internal fabric and the insert on the back are made with Italian DWR treated fabric, the internal pocket is made from the external fabric.

The garment is equipped with a double slider front zipper in graphite, two coated zips, one with logo on the side pockets and personalized details such as the MOMODESIGN anthracite reflex print on the back and the snaps on the biker collar.

Features:

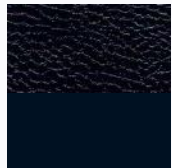
- External faux leather fabric
- Internal fabric and Italian DWR insert
- Double slider graphite front zipper
- Two external pockets with coated zips, one with logo
- Internal eco-leather pocket
- Custom zipper pullers
- Automatic MOMODESIGN
- Anthracite MOMODESIGN reflex print on the back
- 3 possible color variants

Tech specs:

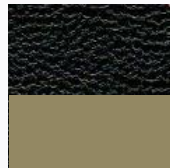
- Sizes: S – M – L – XL – XXL
- Content:
 - ❖ Outside: 63% PU – 5% PL – 21% VI – 4% CO – 2% ME – 5% AF
 - ❖ Lining: 100% PA – Italian fabric 
 - ❖ Inserts: 100% PA – Italian fabric 
- Made in Europe 



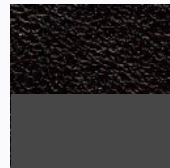
Colors:



NAVY



GREEN /
BEIGE



BLACK /
DARK GRAY

KARACHI - MD-JK2103



KARACHI – MD-JK2103

KARACHI is a lightweight, non-padded field jacket.

The outer fabric, available in several colors, is characterized by an iridescent effect that gives the garment a modern and elegant look, while guaranteeing excellent waterproofing.



Four roomy pockets, one with a coated zip with logo, characterize this coat, while the scuba fabric insert on the shoulders makes the garment more comfortable.

Multiple details and cutting-edge finishes such as the graphite front zipper and custom zipper pullers.

Features:

- External fabric with iridescent effect
- Italian insert fabric
- Mono slider front zipper in graphite
- Four pockets, one with a coated zipper with logo
- Custom zipper pullers
- 3 possible color variants

Tech specs:

- Sizes: S – M – L – XL – XXL
- Content:
 - ❖ Outside: 43% VI – 40% PU – 9% PL – 3% ME – 5% AF
 - ❖ Inserts: 86%PL 14%PU – Italian Fabric 
- Made in Europe 



WATER
RESISTANT



BREATHABLE
FABRIC

Colors:



NAVY
/ BLACK



OCTANIUM
/ BLACK



BROWN /
BLACK

SHANGHAI - MD-JK2104

GRAPHENE™
INSIDE THE FUTURE



SHANGHAI – MD-JK2104

SHANGHAI is a hoodless shell made of nylon with an innovative Graphene lamination.

Available in five possible colors with bright tones, it is perfect for the summer season., As it is able to guarantee the right body temperature in any climate, thanks to the thermal insulation of Graphene and the DWR treatment. The drawstring on the bottom allows you to adapt the fit to your needs. The fluorescent yellow finishes along the zipper and inside make the garment an excellent combination of functionality and design.

This shell is completed by the single-slider front zipper in graphite, the coated zips of the pockets, one of them with logo, the fluorescent yellow MOMODESIGN print on the back combined with the edges and the inevitable MOMODESIGN customizations such as the exclusive Graphene patch in silicone and finally the zip pullers.

Features:

- DWR fabric with Graphene foil
- Mono slider front zipper in black graphite
- Two pockets with coated zipper, one with logo
- Custom zipper pullers
- Neon yellow MOMODESIGN print on the back
- Graphene silicone patch
- 5 possible color variants

Tech specs:

- Sizes: S – M – L – XL – XXL
- Content:
 - ❖ Outside: 99% NY – 1% GRAPHENE
 - ❖ Edging: 100% PA - Italian fabric 
- Made in Europe 



WATER
RESISTANT



BREATHABLE
FABRIC

Colors:



GREEN /
FLUO YELLOW



LIGHT BLUE /
FLUO YELLOW



ORANGE /
FLUO
YELLOW



NAVY /
FLUO
YELLOW



DARK GRAY/
FLUO YELLOW

ORLANDO - MD-JK2105



ORLANDO – MD-JK2105

ORLANDO is an outerwear made with an Italian outer fabric with a membrane that makes it DWR, while the interior is fully lined in mesh, to make it comfortable and, at the same time, light.




This garment has been specially designed to be versatile, giving the possibility of being able to opt for a more elegant and mono-colored look or for a more sporty and colorful look, simply by reversing the fastening of the front zip in such a way as to show, or not, the colored panel with MOMODESIGN reflex print.

Innovation, fashion trend and comfort in a single garment enriched by MOMODESIGN details and customizations, such as the graphite front zip, the snaps on the collar and the zip pullers.

Features:

- External DWR fabric
- Mono slider front zipper in graphite
- Two side pockets without zipper
- Personalized zipper puller
- Automatic MOMODESIGN
- MOMODESIGN reflex print on the panel
- 2 possible color variants

Tech specs:

- Sizes: S – M – L – XL – XXL
- Content:
 - ❖ Outside: 80% PA – 10% PC – 10% PU – Italian fabric 
 - ❖ Lining: 100% PL
 - ❖ Insert: 100% PA – Italian fabric 
- Made in Europe 



Colors:

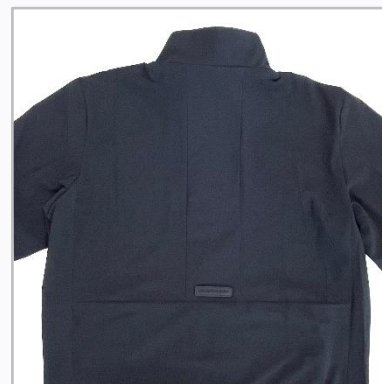


NAVY /
ORANGE /
NAVY



BLACK

GLASGOW - MD-JK2107



GLASGOW – MD-JK2107

GLASGOW is an outerwear made with Italian Sensitive® stretch for maximum ease of use.

Innovation, fashion trend and comfort in a single garment enriched by MOMODESIGN details and customizations, such as the front zipper with personalized zipper puller and the rubberized label on the back.

Two comfortable side zipper pockets complete the garment.

A garment that takes up a minimum of space and therefore can always be carried with you just in case.

Features:

- Sensitive® outer fabric
- Two side pockets with zipper
- Personalized zipper puller
- MOMODESIGN rubberized label
- 2 possible color variants

Tech specs:

- Sizes: S – M – L – XL – XXL
- Content:
 - ❖ 73%PA 27%EA - Italian fabric 
- Made in Europe 

Sensitive
FABRICS



STRETCHY

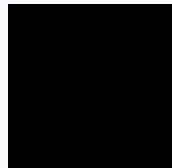


BREATHABLE
FABRIC

Colors:



NAVY



BLACK

BELFAST - MD-JK2108



BELFAST - MD-JK2108

BELFAST is an outerwear made with waterproof fabric. The waterproofing of the garment is made possible thanks to the DWR treatment applied to the fabric. Innovation, fashion trend and comfort in a single garment enriched by MOMODESIGN details and customizations, such as the front zipper with personalized zipper puller and the rubberized label on the back.


Two comfortable side zipper pockets complete the garment.

A garment that takes up a minimum of space and therefore can always be carried with you just in case.

Features:

- External DWR fabric
- Two side pockets with zipper
- Personalized zipper puller
- MOMODESIGN rubberized label
- 2 possible color variants

Tech specs:

- Sizes: S - M - L - XL - XXL
- Content:
 - ❖ 100% PA
- Made in Europe 



Colors:



NAVY



BLACK



SWEATSHIRT

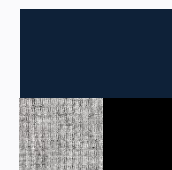
MALAGA — MD-FL2101



COLORS



RED/ BLACK /
GRAY



NAVY / GRAY/
BLACK



GRAY / BLACK /
NAVY

MALAGA is a multicolored sweatshirt made of Italian fabric. The main color alternates between two colors present in the horizontal bands at the waist and in the vertical band on the back and hood. The exclusive black MOMODESIGN reflex print enriches the hood. The garment is available in three colors.

Features:

- Italian fabrics
- Black MOMODESIGN reflex print
- Reflex ribbon with logo on the neck
- 3 possible color variants

Tech specs:

- Sizes: S – M – L – XL – XXL
- Content:
 - ❖ 67% VI – 29% PA – 4% EA
- Made in Europe 

Colors:

- RED/ BLACK/ MELANGE GRAY
- NAVY/ MELANGE GRAY/ BLACK
- MENAGE GRAY/ BLACK/ NAVY

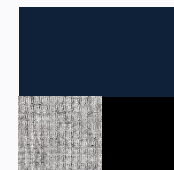


STRETCHY

SARAGOZA — MD-FL2102



COLORS



NAVY / GRAY /
BLACK



RED / BLACK /
GRAY



GRAY / NAVY /
BLACK

The SARAGOZA sweatshirt is the hoodless variant of the MALAGA sweatshirt. It is a garment made with Italian fabric, made unique thanks to the choice of combining several colors together. The predominant color is alternated with inserts of horizontal bands at the waist and vertical on the back in two different colors. The black MOMODESIGN reflex print on the vertical band on the back gives the sweatshirt a unique look.

Features:

- Italian fabrics
- Black MOMODESIGN reflex print
- Reflex ribbon with logo on the neck
- 3 possible color variants

Tech specs:

- Sizes: S – M – L – XL – XXL
- Content:
 - ❖ 67% VI – 29% PA – 4% EA
- Made in Europe 

Colors:

- NAVY/ MELANGE GRAY/ BLACK
- RED/BLACK/ MELANGE GRAY
- MELANGE GRAY/ NAVY/BLACK



STRETCHY

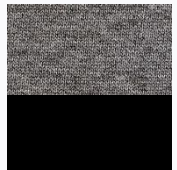
LJUBLJANA — MD-FL2103



COLORS



BLACK



GRAY /
BLACK

LJUBLJANA, is a sweatshirt made of 100% Italian cotton fabric and is characterized by the presence of a fabric pocket with a membrane on the chest that makes it waterproof. It is a simple garment, but details such as the single-slider front zip with "pneumatic" effect and the zipper coated with repeated logos on the chest pocket make it unique and fashionable.

Features:

- Italian fabric 100% cotton
- Fabric inserts with Italian membrane
- Single-slider front zipper with 'pneumatic' effect
- 3 pockets, one with coated zipper with repeated logo
- Personalized zipper puller
- Foldable on hood and wrist
- Reflex ribbon with logo on the neck
- 2 possible color variants

Tech specs:

- Sizes: S – M – L – XL – XXL
- Content:
 - ❖ Outside: 100% CO – Italian fabric 
 - ❖ Insert: 80% PA – 10% PC – 10% PU – Italian fabric 
- Made in Europe 

Colors:

- BLACK with BLACK insert
- MELANGE GRAY with BLACK insert

ZAGREB – MD-FL2104



COLORS



WHITE /
NAVY



GRAY /
NAVY

The ZAGREB sweatshirt is the hoodless variant of the LJUBLJANA. Made of Italian fabric in 100% cotton, it is characterized by the insert of the chest pocket in fabric with an Italian membrane. Among the details we find the coated zipper on the pocket with repeated logo and the rubberized MOMODESIGN label just above the cuff. The garment is available in two colors.

Features:

- Italian fabric 100% cotton
- Fabric inserts with Italian membrane
- Coated zipper pocket with repeated logo
- MOMODESIGN rubberized label
- Reflex ribbon with logo on the neck
- 2 possible color variants

Tech specs:

- Sizes: S – M – L – XL – XXL
- Content:
 - ❖ Outside: 100% CO – Italian fabric 
 - ❖ Insert: 80% PA – 10% PC – 10% PU – Italian fabric 
- Made in Europe 

Colors:

- WHITE with NAVY insert
- MELANGE GRAY with NAVY insert

KIEV — MD-FL2105



The KIEV sweatshirt is made of cotton blend fabric in its unique navy blue color variant. It looks like a sporty sweatshirt, with a practical round neckline. Among the details we find the exclusive pearlescent MOMODESIGN print and the reflex ribbon with logo placed on the back of the neck.

Features:

- European cotton blend fabric
- Pearlescent MOMODESIGN print
- Reflex ribbon with logo on the neck

Tech specs:

- Sizes: S – M – L – XL – XXL
- Content:
 - ❖ 100% CO
- Made in Europe 

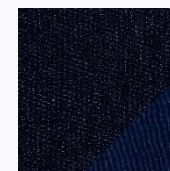
Colors:

- NAVY

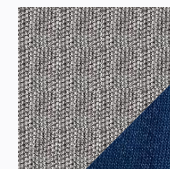
MONTEVIDEO — MD-FL2106



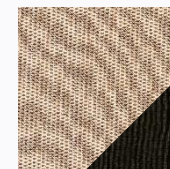
COLORS



NAVY/
LIGHT BLUE



GRAY/
ROYAL





MUSTARD/
GREEN

MONTEVIDEO is a zipped sweatshirt with a drawstring hood. Double face Italian fabric is used on both sides to give the garment a unique two-tone look. The sweatshirt is available in three colors. The look is completed by the color matched front zipper and the rubberized MOMODESIGN label on the neck.

Features:

- Italian fabric
- Front zipper in tone
- 2 side pockets
- Personalized zipper puller
- MOMODESIGN rubberized label on the neck
- Reflex ribbon with logo on the neck
- 3 possible color variants

Tech specs:

- Sizes: S – M – L – XL – XXL
- Content:
 - ❖ 98% CO – 2% PA – Italian fabric 
- Made in Europe 

Colors:

- NAVY/LIGHT BLUE
- GRAY/ROYAL
- MUSTARD/GREEN



SWEATER

BERGEN – MD-SW2101A



The BERGEN sweater is made with Italian cotton blend fabric. The classic crew neck and raglan sleeves make it a practical and comfortable garment. The look is completed by the rubberized MOMODESIGN label on the sleeve.

Features:

- Italian fabric
- Exclusive rubberized label on the sleeve
- Reflex ribbon with logo on the neck

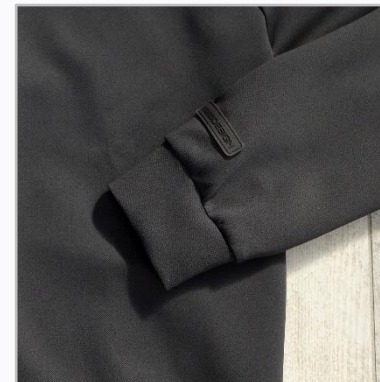
Tech specs:

- Sizes: S – M – L – XL – XXL
- Content:
 - ❖ 43% CO – 57% PL – Italian fabric 
- Made in Europe 

Colors:

- NAVY/BLACK

MALMO — MD-SW2101B



MALMO is the technical version of the BERGEN. The Italian technical fabric with all-over print is particularly soft to the touch. The look is completed by the rubberized MOMODESIGN label on the sleeve.




STRETCHY

Features:

- Italian fabric
- Exclusive rubberized label on the sleeve
- Reflex ribbon with logo on the neck

Tech specs:

- Sizes: S – M – L – XL – XXL
- Content:
 - ❖ 90% PL – 10% EA 
- Made in Europe 

Colors:

- BLACK

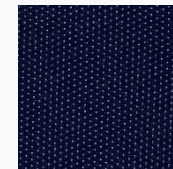


POLOS

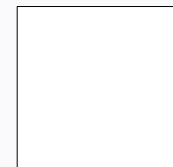
ADELAIDE – MD-SH2101



DRAWING 1



DRAWING 2



WHITE



BLACK



NAVY





COLORS

ADELAIDE, made with an Italian technical fabric, light, breathable and easy care, will make you forget you are wearing a shirt, especially on hot days or long working days. It is characterized by fine details such as: the exclusive three-hole buttons with lasered logo, the MOMODESIGN silver reflex print placed in the internal list that can be made visible by undoing the first two buttons and the thermo-adhesive brand label.

Features:

- Italian technical fabric
- 3-hole buttons with lasered logo
- MOMODESIGN silver reflex print
- Iron-on brand label
- Reflex tape with logo
- 5 possible color variants

Tech specs:

- Sizes: S – M – L – XL – XXL
- Content:
 - ❖ Variant 1: 45% PA – 45% PL – 10% EA – Italian fabric 
 - ❖ Variant 2: 55% PA – 35% PL – 10% EA – Italian fabric 
 - ❖ Variant 3, 4 e 5: 85% PL – 15% EA – Italian fabric 
- Made in Europe 



STRETCHY



EASY CARE



QUICK DRY



LIGHT WEIGHT



WRINKLE FREE

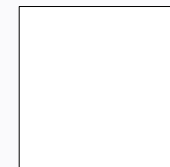
FIRENZE — MD-PL2101



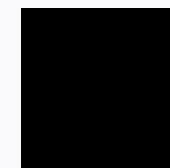
DRAWING 1



DRAWING 2



WHITE



BLACK



NAVY





COLORS

The FIRENZE polo shirt made with the same Italian technical fabric as the ADELAIDE shirt, light, breathable and easy care, and is available in five variants, two patterned and 3 plain. Characteristic elements are: the MOMODESIGN reflex print on the edge of the sleeve, the exclusive three-hole buttons with lasered logo and the thermo-adhesive brand label.

Features:

- Italian technical fabric
- 3-hole buttons with lasered logo
- MOMODESIGN silver reflex print
- Iron-on brand label
- Reflex tape with logo
- 5 possible color variants

Tech specs:

- Sizes: S – M – L – XL – XXL
- Content:
 - ❖ Variant 1: 55% PA – 35% PL – 10% EA – Italian fabric 
 - ❖ Variant 2: 45% PA – 45% PL – 10% EA – Italian fabric 
 - ❖ Variant 3, 4 e 5: 85% PL – 15% EA – Italian fabric 
- Made in Europe 



STRETCHY



EASY CARE



QUICK DRY



LIGHT WEIGHT



WRINKLE-FREE

MANCHESTER — MD-PL2102



The MANCHESTER polo shirt is made with an innovative jacquard technical fabric with Graphene. Thanks to the properties of this latest generation material, the garment is breathable and able to keep the basal body temperature constant in case of changes in the surrounding temperature or in case of physical exertion. Details such as the exclusive three-hole buttons with lasered MOMODESIGN logo and the thermo-adhesive brand label complete this garment.

Features:

- Jacquard fabric with Graphene
- 3-hole buttons with lasered logo
- Iron-on brand label
- Reflex ribbon with logo on the neck

Tech specs:

- Sizes: S – M – L – XL – XXL
- Content:
 - ❖ 95% PL (con 0,2% GRAPH.) – 5% EA
- Made in Europe 

Colors:

- GRAY



STRETCHY



T-SHIRT

DAKAR — MD-TS2101



The DAKAR t-shirt is made with Italian stretch cotton fabric for an excellent fit and comfort of use.

It comes with a reflex print that repeats the logo in silver, gray and black..



LIGHT
WEIGHT



STRETCHY

Features:

- Italian fabric
- Iron-on brand label
- Three-tone gray reflex print

Tech specs:

- Sizes: S – M – L – XL – XXL
- Content:
 - ❖ 90%CO 10%EA - Italian fabric 
- Made in Europe 

Available colours:

- BLACK

BRASILIA – MD-TS2102



The BRASILIA T-shirt is made of gray mélangé fabric of European origin with Microfresh® technology, which gives it lightness and freshness; the insert is made of stretch cotton.

The garment is completed by the metallic print in two colors with negative logo.

Features:

- Microfresh® technical European fabric
- Italian insert fabric
- Metallic print with negative MOMODESIGN logo
- Iron-on brand label

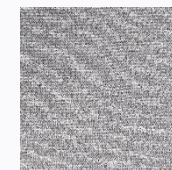
Tech specs:

- Sizes: S – M – L – XL – XXL
- Content:
 - ❖ Body: 100% PL – European fabric 
 - ❖ Insert: 90% CO – 10% EA – Italian fabric 
- Made in Europe 

Colors:

- GRAY with BLACK insert

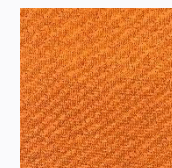
ROMA EUR – MD-TS2103A



GRAY



BLUETTE



ORANGE



GREEN

COLORS



EASY CARE



QUICK DRY



LIGHT WEIGHT





WRINKLE FREE

ROMA EUR is a t-shirt designed to fully recall the homeland of the MOMODESIGN brand, in melange colors with the Italian tricolor print on the chest; available in four variants. It is made with fabric of European origin with Microfresh® technology, fresh and comfortable.

Features:

- Microfresh® technical european fabric
- Tricolor print on the chest
- Thermoadesive brand label
- Four colors variant

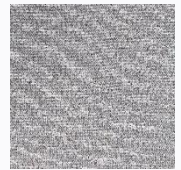
Tech specs:

- Sizes: S – M – L – XL – XXL
- Content:
 - ❖ 100%PL - European Fabric 
- Made in Europe 

Colors:

- MELANGE GRAY
- MELANGE BLUETTE
- MELANGE ORANGE
- MELANGE GREEN

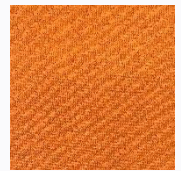
ROMA PARIOLI – MD-TS2103B



GRAY



BLUETTE



ORANGE



GREEN

COLORS

ROME PARIOLI. the second version of the ROMA EUR, is also presented in mélange colors and is characterized by the three-tone gray reflex print on the chest.

It is made of a fabric of European origin with Microfresh® technology, fresh and comfortable.



EASY CARE



QUICK DRY



LIGHT WEIGHT





WRINKLE FREE

Features:

- Microfresh® technical European fabric
- Tricolor print on the chest
- Iron-on brand label
- 4 color variants

Tech specs:

- Sizes: S – M – L – XL – XXL
- Content:
 - ❖ 100%PL - European Fabric 
- Made in Europe 

Colors:

- MELANGE GRAY
- MELANGE BLUETTE
- MELANGE ORANGE
- MELANGE GREEN

LA VALLETTA – MD-TS2104



The LA VALLETTA t-shirt is made with European technical pique fabric with Microfresh® technology. It is characterized by the colored silkscreen print that runs along the side.



EASY
CARE



QUICK
DRY



WRINKLE
FREE

Features:

- European fabric
- Colored screen printing
- Iron-on brand label

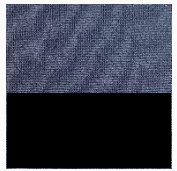
Tech specs:

- Sizes: S – M – L – XL – XXL
- Content:
 - ❖ 100% PA – European fabric 
- Made in Europe 

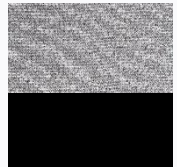
Colors:

- WHITE

MUMBAI – MD-TS2105



BLUE /
BLACK



GRAY/
BLACK

COLORS

The MUMBAI t-shirt is made using a fabric treated with Microfresh® technology, which makes the garment light and breathable, suitable for hot summer days or hectic spring days.

The MOMODESIGN print, applied on the rear insert, in stretch cotton, is in reflex material.



EASY
CARE



QUICK
DRY



LIGHT
WEIGHT



WRINKLE
FREE

Features:

- Microfresh® technical European fabric
- Italian insert fabric
- MOMODESIGN reflex print
- Iron-on brand label
- 2 possible color variants

Tech specs:

- Sizes: S – M – L – XL – XXL
- Content:
 - ❖ Body: 100% PL – European fabric 
 - ❖ Insert: 94% CO – 6% EA 
- Made in Europe 

Colors:

- MELANGE BLUETTE with BLACK insert
- MELANGE GRAY with BLACK insert

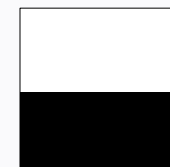
MASQAT – MD-TS2106



COLORS



BLACK /
WHITE



WHITE /
BLACK

The MASQAT t-shirt is in Italian stretch cotton with contrasting edges and white PU MOMODESIGN logo on the chest. The quality of the fabric and the sober look make it suitable for different moments of the day.



LIGHT
WEIGHT



STRETCHY

Features:

- Italian fabric
- Contrasting Italian fabric inserts
- White PU logo print
- Iron-on brand label
- 2 color variants

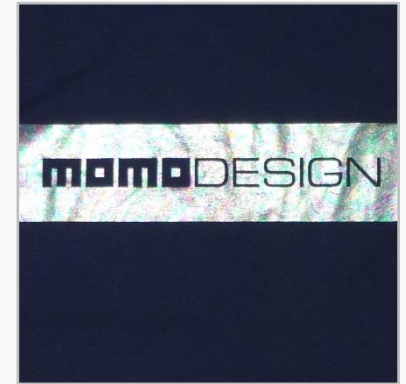
Tech specs:

- Sizes: S – M – L – XL – XXL
- Content:
 - ❖ Body: 94% CO – 6% EA
 - ❖ Insert: 94% CO – 6% EA
- Made in Europe 

Colors:

- BLACK with WHITE insert
- WHITE with BLACK insert

LISBOA — MD-TS2107



The LISBOA T-shirt is made with 100% European cotton fabric and is characterized by the exclusive and brand new pearlescent MOMODESIGN print. A T-shirt for those who do not want to go unnoticed.




LIGHT
WEIGHT

Features:

- European fabric
- Pearlescent MOMODESIGN print
- Iron-on brand label

Tech specs:

- Sizes: S – M – L – XL – XXL
- Content:
 - ❖ 100% CO
- Made in Europe 

Colors:

- NAVY

DUBAI – MD-TS2108



The DUBAI t-shirt is made with 100% European cotton fabric in its unique navy blue variant and is characterized by a large colored screen print on the front with the MOMODESIGN logo.

The lightness and quality of the fabric make it a sporty and functional t-shirt..




LIGHT
WEIGHT

Features:

- European fabric
- Large front screen printing
- Iron-on brand label

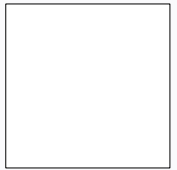
Tech specs:

- Sizes: S – M – L – XL – XXL
- Content:
 - ❖ 100% CO
- Made in Europe 

Colors:

- NAVY

MARRAKECH— MD-TS2109



WHITE



BLACK



GRAY



NAVY

COLORS

The MARRAKECH t-shirt is made with a cotton blend fabric available in four colors. The lightness and quality of the fabric make it a sporty and functional t-shirt, embellished with the 3D logo on the sleeve.



LIGHT
WEIGHT




STRETCHY

Features:

- European fabric
- Large front screen printing
- Iron-on brand label
- 4 possible color variants

Tech specs:

- Sizes: S – M – L – XL – XXL
- Content:
 - ❖ 94% CO – 6% EA
- Made in Europe 

Colors:

- WHITE
- BLACK
- MELANGE GRAY
- NAVY



TROUSERS

UTRECHT — MD- PN2101



UTRECHT is a drawstring trousers, designed to adapt to all business and / or leisure occasions.

The famous Italian Sensitive® fabric in fact guarantees not only the comfort given by the stretch properties, but also a perfect shape, thanks to the wrinkle free technology, which will allow you to wear these trousers all day long without creasing.

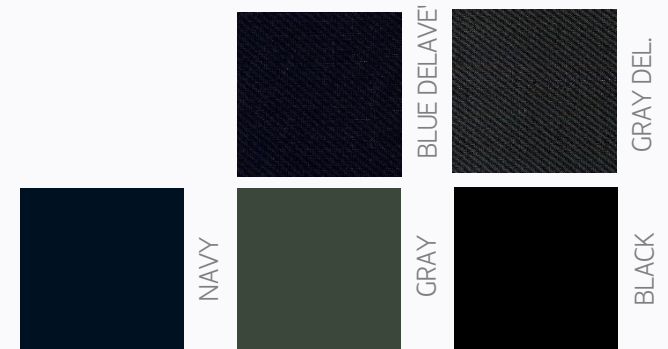
The perfect fit is guaranteed by the elastic waistband to which an internal drawstring with silicone stopper is added. The small MOMODESIGN reflex print positioned on the back pocket completes this garment.

It is proposed in two delavè diagonal striped variants and three united variants.

Sensitive
FABRICS



COLORS



Features:

- Sensitive® Italian fabric
- 4 pockets
- Rear reflex MOMODESIGN print
- Drawstring waist with silicone stopper
- 5 possible color variants

Tech specs:

- Sizes: S – M – L – XL – XXL
- Content:
 - ❖ V.1 e 2: 59% PA – 41% EA – Italian fabric
 - ❖ V. 3, 4 e 5: 80% PA – 20% EA – Italian fabric
- Made in Europe

HONOLULU — MD- PN2102



HONOLULU is the Bermuda version of the UTRECHT trousers. The Italian Sensitive® fabric, fresh and quick dry, will be appreciated especially on hot summer days. The garment has three pockets: two classic front and one rear with reflex print above. The perfect fit is guaranteed by the elastic waistband to which an internal drawstring with silicone stopper is added. It is proposed in three delavè variants and three united variants.

Sensitive
FABRICS



COLORS



Features:

- Sensitive® Italian fabric
- 3 pockets
- Rear reflex MOMODESIGN print
- Drawstring waist with silicone stopper
- 6 possible color variants

Tech specs:

- Sizes: S – M – L – XL – XXL
- Content:
 - ❖ V. 1, 2 e 3: 59% PA – 41% EA – Italian fabric
 - ❖ V. 4, 5 e 6: 80% PA – 20% EA – Italian fabric
- Made in Europe

ROTTERDAM — MD- PN2103



ROTTERDAM is made with Italian Sensitive® fabric, fresh and quick dry and will be appreciated especially on hot summer days. The garment has four pockets: two classic front and two rear, to give a classic Chino look but with an absolutely innovative fabric. It is proposed in three solid color variants and is completed with the stud above the back right pocket

Sensitive
FABRICS



COLORS



NAVY



GRAY





BLACK

Features:

- Sensitive® Italian fabric
- 4 pockets
- MOMODESIGN stud on the back pocket
- 3 possible color variants

Tech specs:

- Sizes: S – M – L – XL – XXL
- Content:
 - ❖ 80% PA – 20% EA – Italian fabric 
- Made in Europe 



ACCESSORIES

BOSTON — MD-BH2001



BOSTON is a unique cap, inspired by one of the undisputed capitals of baseball, made in the exclusive patented One Touch technique, in which the cap is totally seamless.

Made of breathable and lined stretch fabric, even without back adjustment it fits almost all head sizes.

The cap is customized with front and back metallic applications.



Features:

- Shell with seamless One Touch technology
- Front and rear metal applications
- Unique shell that adapts to different sizes thanks to the stretch fabric
- Internal logo label printed

Tech specs:

- Sizes: One fits all
- Content:
 - ❖ 100%PL
- Made in China

Available colours:

- GRAY

CHICAGO — MD-BH2002



CHICAGO is a unique cap, inspired by one of the undisputed capitals of baseball, made in the exclusive patented One Touch technique, in which the cap is totally seamless.

Made of breathable and lined stretch fabric, even without back adjustment it fits almost all head sizes.

The cap is customized with a rich embroidery on the front and a rubberized application on the back.



Features:

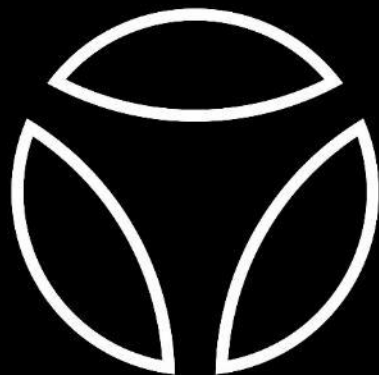
- Shell with seamless One Touch technology
- Front embroidery
- Rear rubberized application
- Unique shell that adapts to different sizes thanks to the stretch fabric
- Internal logo label printed

Tech specs:

- Sizes: One fits all
- Content:
 - ❖ 100%PL
- Made in China

Available colours:

- BLACK



GOLF@360 Srl

OFFICIAL WORLDWIDE URBANWEAR LICENSEE

Registered Offices: Via Larga, 8 – 20122 – Milano (MI) - Italy

Headquarters and Showroom: Via Montale 1/b – 22070 – Bulgarograsso (CO) - Italy

Email: info@golf360.it – Website: www.golf360.it – Tel.: +39.031.9349210

VAT #: IT07362730967 – REA Milano: 1953422

WWW.MOMODESIGN.COM