

MOMODESIGN

WOMAN'S
S/S 2021
COLLECTION

URBANWEAR

technology tailored



An Urbanwear collection that combines the more technical needs of those who live the city in a dynamic way, with motorcycles and / or bicycles, with metropolitan daily life.

Three keywords that frame the Fall / Winter 20-21 collection: TECHNOLOGY TAILORED - DYNAMIC - EASY STYLE.

Balanced volumes and innovative fabrics, designed specifically for the outdoors and beyond.

The careful research of the most advanced technologies in fabrics is combined with the search for an easy chic metropolitan style, where the contaminations between different worlds, from sporty to elegant, mix together creating a new stylistic code, for a transversal collection in its use. .

Be elegant, be modern, be hi-tech... be MOMODESIGN URBANWEAR!

PROGETTO
GRAPHENE™
INSIDE THE FUTURE

GRAPHENE™



Graphene is the new textile material that will change the way to make garment.

The unique properties of graphene, such as the thermal conductivity, electrostatic, lightness and antibacterial, make it an interesting material for different application.

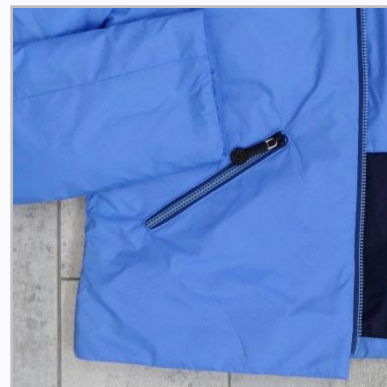
Graphene is an innovative nanotech soft and light material, characterized by high conductive capacities that care the regulation of body temperature.

The warm in hot weather conditions is dispersed, while in the presence of low cold temperatures it is equally distributed stabilizing inside temperature.



OUTWEAR
WOMAN

PORTOFINO — MD-JKW2101



PORTOFINO — MD-JKW2101

The lightweight PORTOFINO down jacket is made with Italian DWR-treated fabrics and 80 gr Valtherm padding. With a simple and clean cut, without hood and with a low crew neckline, this garment guarantees maximum comfort and maximum versatility for an always fashionable look. The garment also features sophisticated customizations and technical finishes, such as the front zipper with blue chain and gray double-slider ribbon and the zipper pockets in the same tone. The garment is completed by the reflex stripe with lasered logo on the back.

Features:

- Italian DWR fabrics
- Double slider front zipper with blue chain and gray ribbon
- 2 external zips pockets with blue chain and gray ribbon
- Custom zipper pullers
- Reflex stripe with logo on the back
- 3 possible color variants

Tech specs:

- Sizes: S – M – L – XL – XXL
- Content:
 - ❖ Outside: 100% PA – Italian fabric 
 - ❖ Wadding: 100% PA – Italian fabric 
 - ❖ Lining: 100% PA – Italian fabric 
- Made in Europe 



Colors:



LIGHT BLUE /
NAVY



MIL. GREEN
/ BEIGE



BLACK

HARVARD — MD-JKW2102



HARVARD — MD-JKW2102

HARVARD is a blazer made with Italian DWR fabrics. The 45 g ultra light padding. it is suitable for maintaining good thermal comfort in spring or on cool summer days. The design of this garment allows for versatile use, both on professional occasions and in leisure time.

The garment is completed by sophisticated customizations and technical finishes, such as the front zipper with chain and single-slider military green ribbon, the zipper of the black internal pocket covered with a repeated logo and the exclusive MOMODESIGN automatic on the collar.

In addition, the external pockets have comfortable invisible zips and there is, as in all the items in the collection, the reflex strip on the back with lasered logo.

Features:

- Italian DWR fabrics
- 45 gr wadding.
- Mono slider front zipper with military green ribbon and chain
- 2 external pockets with invisible zipper
- Internal zipper pocket with repeated logo
- Personalized zipper puller
- Automatic MOMODESIGN
- Reflex stripe with logo on the back
- 3 possible color variants

Tech specs:

- Sizes: S – M – L – XL – XXL
- Content:
 - ❖ Outside: 100% PA – Italian fabric 
 - ❖ Wadding: 100% PA – Italian fabric 
 - ❖ Lining: 100% PA – Italian fabric 
- Made in Europe 



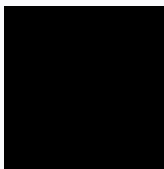
Colors:



MILITARY
GREEN



NAVY /
LIGHT
BLUE



BLACK

LAHAUR — MD-JKW2103



LAHAUR – MD-JKW2103

The LAHAUR jacket is an unlined field jacket with no padding.

This garment made of an Italian DWR fabric, available in several colors, is characterized by an iridescent effect, which gives it a modern and elegant look.

The garment is characterized by customized details and technical finishes, such as the double-slider graphite zipper, the multiple pockets, one with a black waterproof zipper with logo and the MOMODESIGN press studs on the front.

Also present the cuff with stud on the left wrist and the reflex strip with lasered logo on the back.

Features:

- Italian DWR fabric
- Double slider front graphite zipper
- 3 external pockets, one of them with waterproof black logo zipper
- Custom zipper pullers
- Automatic MOMODESIGN
- Reflex stripes with logo on the back
- Exclusive logo stud on the wrist
- 3 possible colors variant

Tech specs:

- Sizes S – M – L – XL – XXL
- Content:
 - ❖ 43% VI – 40% PU – 9% PL – 3% ME – 5% AF 
 - ❖ Made in Europe 



WATER
RESISTANT



BREATHABLE
FABRIC

Colors:



BEIGE



PINK



BLUE

HANOI — MD-JKW2104

GRAPHENE™
INSIDE THE FUTURE



HANOI – MD-JKW2104

The HANOI jacket takes inspiration from the shells of the MomoDesign collections and has been made in the sophisticated fabric with a graphene membrane. Available in four colors, it is particularly suitable for trips out of town thanks to the characteristics of Graphene which provides complete isolation of the body from external atmospheric agents, always maintaining the correct body temperature.

The garment features sophisticated customizations and technical finishes, such as the double-slider graphite front zipper, the zipper on the waterproof pocket with logo and the drawstring at the waist with silicone stopper so as to give the garment a sporty but always fashionable look. The left cuff with ultralight metal stud and the reflex stripe with lasered logo on the back complete the look.

Features:

- Body entirely in fabric with graphene membrane
- Double slider front zip in graphite
- 3 external pockets, one with logo waterproof zipper
- Custom zipper pullers
- Drawstring waist with silicone stopper
- Reflex stripe with logo on the back
- 4 possible color variants

Tech specs:

- Sizes: S – M – L – XL – XXL
- Content:
 - ❖ 99% NY – 1% GRAPHENE
- Made in Europe 



WATER
RESISTANT



BREATHABLE
FABRIC

Colors:



MILITARY
GREEN



RED



NAVY



DARK
GRAY

SEATTLE — MD-JKW2105



SEATTLE – MD-JKW2105

SEATTLE is an exclusive trench coat that represents perhaps the most avant-garde garment of the S/S 2021 women's collection. It is made both in a highly sought after Italian fabric with silver checkering, and in a plain Italian technical fabric. Both are WR treated fabrics able to make the garment waterproof. The two spacious external pockets, the wide collar and the fabric belt at the waist complete the garment making it elegant and fashionable. The trench coat also features sophisticated customizations and technical finishes, such as the two-way graphite front zipper and the black MOMODESIGN reflex print applied on the chest. Also there is no lack of classic studded cuff.

Features:

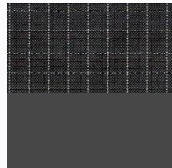
- Body in Italian WR fabric
- 2 versions in silver Ribstop and 2 in plain color
- Double slider front zipper in graphite
- Custom zipper pullers
- Black MOMODESIGN reflex print on the chest
- Fabric belt at the waist
- 4 possible color variants

Tech specs:

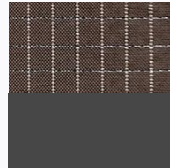
- Sizes: S – M – L – XL – XXL
- Content:
 - ❖ Outside V.1: 98% PL – 2% PA – Italian fabric 
 - ❖ Outside V.2: 100% PA – Italian fabric 
 - ❖ Lining 100% PA – Italian fabric 
- Made in Europe 



Colors:



GRAY /
DARK
GRAY



BEIGE /
DARK
GRAY



NAVY /
DARK
GRAY



BLACK /
DARK
GRAY

CARDIFF — MD-JKW2106



CARDIFF — MD-JKW2106

BELFAST is an outerwear made with waterproof fabric. The waterproofing of the garment is made possible thanks to the DWR treatment applied to the fabric. Innovation, fashion trend and comfort in a single garment enriched by MOMODESIGN details and customizations, such as the front zipper with personalized zipper puller and the rubberized label on the back.


Two comfortable side zipper pockets complete the garment.

A garment that takes up a minimum of space and therefore can always be carried with you just in case.

Features:

- External DWR fabric
- Two side pockets with zipper
- Personalized zipper puller
- MOMODESIGN rubberized label
- 2 possible color variants

Tech specs:

- Sizes: S – M – L – XL – XXL
- Content:
 - ❖ 100% PA
- Made in Europe 



Colors:



NAVY



BLACK



**SWEATSHIRTS
AND SWEATERS
WOMAN**

BUENOS AIRES— MD- FLW2101



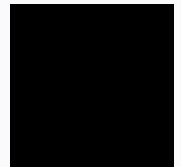
COLORS



NAVY



GRAY



BLACK



RED





WHITE

The BUENOS AIRES is a boxy cut sweatshirt with three-quarter sleeves and is made of Italian viscose blend fabric. The simple and minimal line makes the garment extremely versatile and functional. It is characterized by the MOMODESIGN reflex print on the bottom and the reflex ribbon with logo on the neck. Five possible color variants.

Features:

- Italian viscose blend fabric
- MOMODESIGN silver reflex print
- Reflex tape on the neck
- 5 possible color variations

Tech specs:

- Sizes: S – M – L – XL – XXL
- Content:
 - ❖ 67% VI – 29% PA – 4% EA – Italian fabric 
- Made in Europe 

Colors:

- NAVY
- GRAY MELANGE
- BLACK
- RED
- WHITE



DUSSELDORF — MD- FLW2102



GRAY



NAVY



BLACK



RED





WHITE

COLORS

Features:

- Italian viscose blend fabric
- MOMODESIGN reflex print
- Reflex tape on the neck
- 5 possible color variations

Tech specs:

- Sizes: S – M – L – XL – XXL
- Content:
 - ❖ 67% VI – 29% PA – 4% EA – Italian fabric 
- Made in Europe 

Colors:

- GRIGIO MELANGE
- NAVY
- BLACK
- RED
- WHITE.



The DUSSELDORF sweatshirt is made with Italian viscose blend fabric able to give the garment comfort and versatility. The oversized line guarantees maximum comfort and the details such as the MOMODESIGN reflex print on the bottom and the reflex ribbon with logo on the neck complete the look.

DURBAN — MD- FLW2103



The DURBAN sweatshirt takes up the same line as the BUENOS AIRES sweatshirt.

The Made in Europe fabric is Microfresh®, therefore stretch and breathable for high comfort.

The MOMODESIGN reflex print applied on the bottom of the sweatshirt characterizes this garment making it recognizable as well as the reflex logoed ribbon applied on the back neckline.

Features:

- Microfresh® technical European fabric
- MOMODESIGN reflex print
- Reflex tape on the neck

Tech specs:

- Sizes: S – M – L – XL – XXL
- Content:
 - ❖ Fabric: 93% PA – 7% EA – Made in Europe 
- Made in Europe 

Colors:

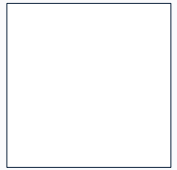
- WHITE



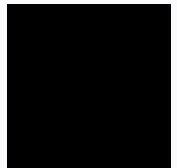


**T-SHIRT
WOMAN**

LA HABANA — MD-TSW2101A



WHITE




BLACK

COLORS

Features:

- 100% cotton fabric
- MOMODESIGN anthracite foil
- 2 possible color variants

Tech specs:

- Sizes: S – M – L – XL – XXL
- Content:
 - ❖ 100% CO
- Made in Europe 

Colors:

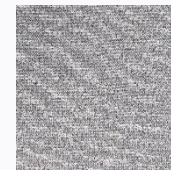
- WHITE
- BLACK

The LA HABANA t-shirt has been designed with a soft fit and is made of 100% cotton fabric.

The anthracite MOMODESIGN foil, placed on the side, characterizes the look.

The T-shirt is available in two possible color variants.

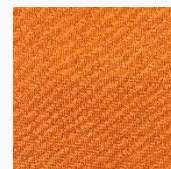
VARADERO — MD-TSW2101B



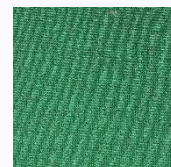
GRAY



BLUETTE



ORANGE



GREEN

COLORS



EASY CARE



QUICK DRY



LIGHT WEIGHT



WRINKLE FREE

Features:

- Microfresh® technical European fabric
- MOMODESIGN anthracite foil
- 4 possible color variants

Tech specs:

- Sizes: S – M – L – XL – XXL
- Content:
 - ❖ 100% PL – European Fabric
- Made in Europe



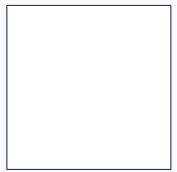
Colors:

- GRAY MELANGE
- BLUETTE
- ORANGE
- GREEN

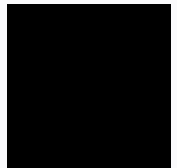
The VARADERO t-shirt has been designed with a soft fit and is made of Microfresh® technical European fabric, representing the more technical variant of the LA HABANA t-shirt.

The anthracite MOMODESIGN foil, placed on the side, characterizes the look. The T-shirt is available in four possible color variations.

CARACAS— MD-TSW2102A



WHITE




BLACK

COLORS

Features:

- 100% cotton fabric
- MOMODESIGN anthracite foil
- 2 possible color variants

Tech specs:

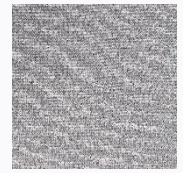
- Sizes: S – M – L – XL – XXL
- Content:
 - ❖ 100% CO
- Made in Europe 

Colors:

- WHITE
- BLACK.

The CARACAS tank top is in 100% cotton fabric, features the anthracite MOMODESIGN foil, applied vertically on the side like the other t-shirts of the group and is designed to have a soft fit. A classic MOMODESIGN graphic available in two possible color variants.

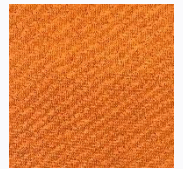
MARACAIBO — MD-TSW2102B



GRAY



BLUETTE



ORANGE




GREEN

COLORS

Features:

- Microfresh® technical European fabric
- MOMODESIGN anthracite foil
- 4 possible color variants

Tech specs:

- Sizes: S – M – L – XL – XXL
- Content:
 - ❖ 100% PL- European Fabric 
- Made in Europe 

Colors

- GRAY MELANGE
- BLUETTE
- ORANGE
- GREEN

The MARACAIBO tank top is the technical variant of the CARACAS because it is made of European Microfresh® fabric. It too features the anthracite MOMODESIGN foil, applied vertically on the side like the other t-shirts of the group and is designed to have a soft fit. Available in four possible colors.

BEVERLY HILLS — MD- TSW2103



LIGHT
WEIGHT



STRETCHY

COLORS



CYCLAMEN



BLACK



NAVY



MILITARY
GREEN



WHITE



FLESH

BEVERLY HILLS is a crop top, with an American cut shoulder, made of tubular Italian technical fabric. The garment is seamless, therefore very comfortable and versatile, and is suitable for everyday use. The tank top is available in six exclusive color variants. Due to its characteristics, the garment is «one size fits all». The look is completed by the silk-screen printing of the logo on the back neckline and the thermo-adhesive brand label.

Features:

- Italian tubular stretch fabric
- Logo screen printing on the back neckline
- 6 possible color variants

Tech specs:

- Sizes: S – M – L – XL – XXL
- Content:
 - ❖ 92% PA – 8% EA – Italian fabric 
- Made in Europe 

Colors:

- CYCLAMEN
- BLACK
- NAVY
- MILITARY GREEN
- WHITE
- FLESH



EASY
CARE



QUICK
DRY



LIGHT
WEIGHT



WRINKLE
FREE

SANTA MONICA – MD-TSW2104



COLORI



SANTA MONICA is a straight-sleeved tank top made of tubular Italian technical fabric. The garment is seamless, therefore very comfortable and versatile, and is suitable for everyday use. The tank top is available in six exclusive color variants. Due to its characteristics, the garment is «one size fits all». The look is completed by the silk-screen printing of the logo on the back neckline and the thermo-adhesive brand label.

Features:

- Italian tubular stretch fabric
- Logo screen printing on the back neckline
- 6 possible color variants

Tech specs:

- Sizes: S – M – L – XL – XXL
- Content:
 - ❖ 92% PA – 8% EA – Italian fabric 
- Made in Europe 

Colors:

- CYCLAMEN
- BLACK
- NAVY
- MILITARY GREEN
- WHITE
- FLESH.





TROUSERS
WOMAN

DELFT — MD- PNW2101



GRAY



NAVY



BLACK



RED



WHITE

COLORS

DELFT is a comfortable, versatile and sporty leggings in Italian viscose blend fabric.

The trousers have stitching on the front that simulate pockets while the back pockets are functional.

The minimal reflex print on the right back pocket completes the look. There are five possible color variants.

Features:

- Italian viscose blend fabric
- 2 front fake pockets and 2 rear functional pockets
- Rear reflex MOMODESIGN print
- 5 possible color variations

Tech specs:

- Sizes: S – M – L – XL – XXL
- Content:
 - ❖ 67% VI – 29% PA – 4% EA – Italian fabric 
- Made in Europe 

Colors:

- GRAY MELANGE
- NAVY
- BLACK
- RED
- WHITE.



CANBERRA — MD- PNW2102



NAVY



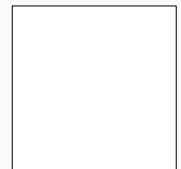
GRAY



BLACK



RED



WHITE

COLORS

CANBERRA is a sporty trousers in Italian viscose blend fabric, comfortable, versatile and sporty.

The trousers have four pockets and a characteristic reflex print on the bottom of the leg completes the look.

To ensure maximum comfort is the lacing with drawstring at the waist and silicone stopper.

Five possible color variants.

Features:

- Italian viscose blend fabric
- 4 fake pockets
- MOMODESIGN reflex print
- Drawstring at the waist
- 5 possible color variations

Tech specs:

- Sizes: S – M – L – XL – XXL
- Content:
 - ❖ 67% VI – 29% PA – 4% EA – Italian fabric 
- Made in Europe 

Colors:

- NAVY
- GRAY MELANGE
- BLACK
- RED
- WHITE.





ACCESSORIES

BOSTON — MD-BH2001



BOSTON is a unique cap, inspired by one of the undisputed capitals of baseball, made in the exclusive patented One Touch technique, in which the cap is totally seamless.

Made of breathable and lined stretch fabric, even without back adjustment it fits almost all head sizes.

The cap is customized with front and back metallic applications.



Features:

- Shell with seamless One Touch technology
- Front and rear metal applications
- Unique shell that adapts to different sizes thanks to the stretch fabric
- Internal logo label printed

Tech specs:

- Sizes: One fits all
- Content:
 - ❖ 100%PL
- Made in China

Available colours:

- GRAY

CHICAGO — MD-BH2002



CHICAGO is a unique cap, inspired by one of the undisputed capitals of baseball, made in the exclusive patented One Touch technique, in which the cap is totally seamless.

Made of breathable and lined stretch fabric, even without back adjustment it fits almost all head sizes.

The cap is customized with a rich embroidery on the front and a rubberized application on the back.



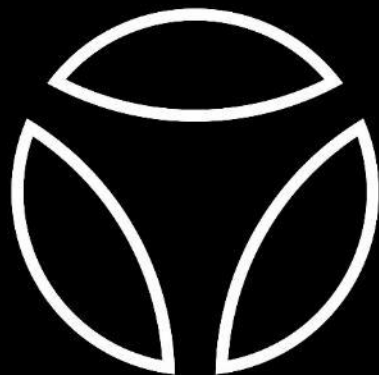
- Shell with seamless One Touch technology
- Front embroidery
- Rubberized back application
- Unique shell that adapts to different sizes thanks to the stretch fabric
- Internal logo printed label

Dettagli tecnici:

- Taglie: One fits all
- Composizione:
 - ❖ 100%PL
- Made in China

Colori disponibili:

- BLACK



GOLF@360 Srl

OFFICIAL WORLDWIDE URBANWEAR LICENSEE

Registered Offices: Via Larga, 8 – 20122 – Milano (MI) - Italy

Headquarters and Showroom: Via Montale 1/b – 22070 – Bulgarograsso (CO) - Italy

Email: info@golf360.it – Website: www.golf360.it – Tel.: +39.031.9349210

VAT #: IT07362730967 – REA Milano: 1953422

WWW.MOMODESIGN.COM