



Tonino Lamborghini

GOLF

EQUIPMENT CATALOGUE

Tonino Lamborghini

Tonino Lamborghini's first exclusive golf clubs, golf accessories and sportswear line is perfectly suited to today discerning customer requirements of quality, comfort and style.

Golf accessories are made with the latest technology of Honma Japan, whereas sportswear is designed and Made in Italy.



Mr. Tonino Lamborghini
President of
Tonino Lamborghini Company





Mira and Countach reproduced with the permission of Automobili Lamborghini S.p.A., which is not associated with Tonino Lamborghini S.p.A.



Palazzo del Vignola, Funo di Argelato (BO)
Tonino Lamborghini Company Headquarters

BRAND

Founded in Italy in 1981 by Mr. Tonino Lamborghini, heir of the Lamborghini family, today the company's headquarters are located in the magnificent Palazzo del Vignola, a Renaissance villa just outside Bologna's city walls.

Mr. Lamborghini has taken inspiration from his family heritage and his vast experience in mechanical and automotive engineering to develop a lifestyle experience brand with a range of luxury design products, including: watches, eyewear, smartphones, perfumes, furniture, clothing, sports accessories, signature beverages, 5-star boutique hotels, lounges and restaurants.

For more than 30 years, Tonino Lamborghini has been a byword for Made in Italy lifestyle.

By staying true to the tradition and heritage of the Lamborghini family, the Tonino Lamborghini Company seeks to promote distinctive Italian style and taste. Uncompromising spirit, Italian ingenuity and design - together with the talent of a brand recognized throughout the globe as a beacon of luxury, exclusivity and Italian flair - are the values of the Tonino Lamborghini brand.

The company's vision is to bring the passion and spirit of Italy to the global market with unique and distinctive products, inspired by Italian industrial design and the Lamborghini family mechanical heritage.

VISION

The Tonino Lamborghini Company vision is to bring the passion and spirit of Italy to the global market through unique and distinctive products, inspired by the world of mechanical engineering and industrial design.



TODAY

The Tonino Lamborghini Company focuses on development and positioning of luxury accessories in North America, Europe, Asia and Middle East.





Blend of Sakata's craftsmanship and state of the art technology.

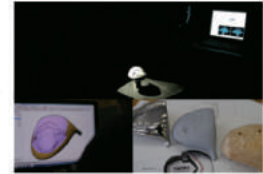
For the ultimate in craftsmanship.
Made in Japan,
SAKATA

Manufacturing process — Wood



Master model production

HONMA's club creation begins with the designer carving a wood pattern, which becomes the master model.



3D scanner

A copper master is made by scanning a wood pattern using a 3D scanner, and by utilizing CAD and a sophisticated NC machine.



Polishing

Polish on the head is measured to a one-hundredth of a millimeter. The sensibilities of a master craftsman bring out the club's beauty.



Ultrasound test

Polished head is tested for face thickness using ultrasound.



Coating

Spraying process showcases a master craftsman's skills. Each product is created by hand.



Assembly

Master craftsman checks the lie, loft, and face directions personally with a sharp eye.



Balance checks

The balance is checked at the end against the standards using a calibrated balance.



Manufacturing process — Iron



Creating the master model

The creation of a HONMA club starts with the designer carving the Cerro master out of a proprietary tin/bismuth alloy; this will serve as the master model.



3D Scanning and CAD

The master model is scanned in 3D, and the data brought into a CAD program, where functionality is added to the design.



Wax pump and casting creation

We use Lost Wax Production Method (precision casting method) which uses a mold.

* This varies by model.



Sanding

A master craftsman will carve the club into a shape visualized by the designer.



Plating and spot composite plating, router polishing

Depending on the model, the back face may also be hand-plated with 24-karat gold, bringing out the beauty of the iron.



Assembly

Highly precise assembly at the hands of craftsmen results in club sets with very low tolerances.



Inserting the grip, checking the lie and loft angles

Sensors are used to position the grip, which is precisely inserted by machine. The craftsman then takes the grip in his own hands and conducts a visual check.

Manufacturing process — Shaft



Cutting

The best material developed jointly with a carbon fiber manufacturer gets cut precisely into a product.



Winding

Iron core is wound with carbon fiber by hand by a master craftsman.



Heat treatment

Heat treatment that hardens the resin is HONMA's know-how which comes from years of research.



Polish

The iron core is pulled to polish the shaft surface. A master craftsman then polishes the club thoroughly with sandpaper.



Coating

Very delicate and difficult craftsmanship. We have to create a beautiful product by making the coating very thin yet reinforcing strength.



Control of weight, flex and other specifications

Specifications for each individual club are controlled and checked.



C L U

JBS

The latest in Prepreg carbon fiber with an eight-axis structure Designed for directional stability and distance.



While inheriting the legendary feel of the ARMRQ shaft, the ARMRQ8 employs an eight-axis structure and the latest carbon fiber sheeting incorporating innovative materials and technology, resulting in a shaft that balances strength with ease of use. The new ARMRQ8 provides enhanced flexibility and grip, while improving ease of timing, reducing wobbling with mishits, and achieving stability at impact. These in turn lead to improved distance and directionality.

Use of the latest Prepreg carbon fiber sheeting at the end of the shaft provides flexibility and stable impact.

What is the "Latest in Prepreg Carbon Fiber Sheeting"?

The latest in sheeting combines Toray's new TORAYCA® T1100G carbon fiber material with a new resin using NANOALLOY® technology.

TORAYCA® T1100G

This new carbon fiber, developed through technical innovations by Toray for next-generation aerospace applications, brings together two contradictory characteristics: ultra-high strength and high elasticity.



New Resin Using NANOALLOY® Technology

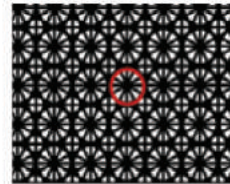
Resins made with Toray's NANOALLOY® technology balance improvements in both elasticity and toughness, offering a cutting-edge material with excellent flexural strength.



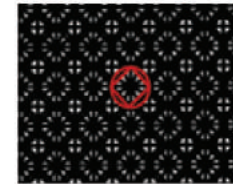
Layered at the end of the shaft, the sheet maintains torque and flexibility, while achieving stability at impact and greater resistance to loss of contact.

Eight-axis structure extends from the center of the shaft to the butt, improving directional stability and distance.

The six-axis structure featured built-in angles approaching a circular form, based on the theory that this form improves resilience against stress from all directions. The ARMRQ8 represents a further evolution of this structure, augmented with additional fibers at 45 degrees. While flex strength remains the same, up by just 0.9%, torsional strength has been improved by 7.6% compared to the six-axis structure. Applying the eight-axis sheeting to the butt end of the shaft delivers enhanced rebound that resists crushing, leading directly to greater ease of timing, and achieving improved distance and directionality.



6-axis carbon



8-axis carbon

Three-point flex and torsional tear test (Versus six-axis material already in use)

	Three-point flex strength	Torsional strength
6-axis	—	—
8-axis	+0.9%	+7.6%

TL51D

DRIVER

Shaft type: Graphite ARMRQ8 3S
Shaft flex: Regular - Stiff

Origin: Made in Japan
#/Loft: 10,5°



The maximum sized head is easy to address and the pose balances its volume. The low back design is able to reduce ball spin and achieves a high ball trajectory. The sweet spot is enlarged by 25%, using a unique face design to reduce distance loss on missed hits. Placing an extra weight at the heel side of the head is able to maximize operability.

Head Material/Manufacturing process	Sole: G4 Titanium Crown: 3AL-2.5V Titanium / Forged	
Face Material	6-4 Titanium / Forged	
Loft (deg.)	10,5	
Lie angle (deg.)	58,5	
Head volume (cm ³)	460	
Distance to center of gravity (mm)	39,5	
Depth to center of gravity (mm)	40,0	
Lenght (inches)	45,5	
ARMRQ8 54 3S	R	D1 - 305
Swing weight - Gross weight (g)	S	D2 - 310



TL51F

FAIRWAY WOOD

Shaft type: Graphite ARMRQ8 3S
Shaft flex: Regular - Stiff

Origin: Made in Japan
#/Loft: #3 15° - #5 18°



Headcover included: Red



Cup face structure of Fairway Woods improves reaction performance and gives greater distance.



Casting body + cup face structure

Cup face improves the reaction performance. Initial ball speed is improved by a partially volumized design, further increasing the reaction performance. Distance is increased by a design of the head volume which is not too rigid, while keeping a great swing contact and operability, thanks to a sharp club face.

Head Material/Manufacturing process	SUS 630 / Casting	
Face Material	High-Strength Customed Steel cup face / Forged	
Loft (deg.)	# 3 / 15	# 5 / 18
Lie angle (deg.)	58,5	59
Head volume (cm ³)	156	149
Length (inches)	42,75	42,25

ARMRQ8 54 3S	R	D0 - 321	D0 - 325
Swing weight - Gross weight (g)	S	D1 - 326	D1 - 330



TL51U

UTILITY WOOD

Shaft type: Graphite ARMRQ8 3S
Shaft flex: Regular - Stiff

Origin: Made in Japan
#/Loft: 19° - 22°

Headcover included: Red



We realized a lowered center of gravity that gives strong operability with a synergy of weight screws and weighted design toward the heel. A partially volumized face design improves the reaction performance. Sharp and smaller head shape leading edges are made for an easier lift when the ball is sunk in high grass and give more control on missed hits.

Head Material/Manufacturing process	SUS 630 / Casting	
Face Material	High-Strength Customed Steel	
Loft (deg.)	U 19 / 19	U 22/ 22
Lie angle (deg.)	59	
Lenght (inches)	39,5	39,0

ARMRQ8 54 3S	R	D0 - 341	D0 - 345
Swing weight - Gross weight (g)	S	D1 - 346	D1 - 350



GRAPHITE IRON SET

Shaft type: Graphite ARMRQ8 3S
Shaft flex: Regular - Stiff
Origin: Made in Japan
#/Loft: #5 to #10

STEEL IRON SET

Shaft type: Steel NS PRO 950GH
Shaft flex: Regular - Stiff
Origin: Made in Japan
#/Loft: #5 to #10

Maraging steel
with high reaction
performance



Mild steel
forged body

(#5~#10) structure.

Irons from #5 to #10 have a 2-piece structure and the reaction area has been widened. Moment of inertia was enlarged and, in combination with a lower and deeper center of gravity design, it gives a stable directionality performance for easier shots also on longer shots.

Head Material/Manufacturing process	Mild Steel / Forged					
Head Material	Maraging stainless steel (face): No.5-No.10					
Head plating	Double-layer plating / Satin finish + Painted finish					
# (No.)	5	6	7	8	9	10
Loft (deg.)	24,0	27,0	30,0	34,0	38,0	43,0
Lie angle (deg.)	60,5	61,0	61,5	62,0	62,5	63,0
Face depression (mm)	3,75	4,00		4,25		
Lenght (inches) ARMRQ8 54 3S	38,25	37,75	37,25	36,75	36,25	35,75
Lenght (inches) N.S.PRO 950GH	38,0	37,5	37,0	36,5	36,0	35,5

ARMRQ8 54 3S	R	D0 - 366	D0 - 372	D0 - 379	D0 - 386	D0 - 392	D0 - 399
Swing weight - Gross weight (g)	S	D1 - 371	D1 - 377	D1 - 384	D1 - 391	D1 - 397	D1 - 404
N.S.PRO 950GH	R	D0 - 402	D0 - 408	D0 - 414	D0 - 421	D0 - 428	D0 - 435
Swing weight - Gross weight (g)	S	D1 - 407	D1 - 413	D1 - 419	D1 - 426	D1 - 433	D1 - 440





TOUR WORLD

FORGED

Honma Sanborgyuru



TL511

HONMA

10

9

8

7

6

TL51W

WEDGE

Shaft type: Steel NS PRO 950GH
Shaft flex: Regular - Stiff

Origin: Made in Japan
#/Loft: 50° - 52° - 56°



Soft iron-forging method of manufacturing delivers exceptional feel on impact with the ball, meeting the high-level needs of all serious golfers. In an effort to maintain a sense of consistency in the transition from our iron clubs, the area around the neck has been sharpened to ensure that no offset is visually perceived. The clean and elegant design of the TL51W wedges matches well with our set of irons.

Head Material	Steel		
# (Loft/Bounce)	50-09	52-09	56-13
Lenght (inches)	35,0	35,0	35,0
Distance to center of gravity (mm)	33,0	33,0	34,0
Height to center of gravity (mm)	23,0	23,0	24,0
The Momentum of Inertia (g*cm2)	3350,0		

N.S.PRO 950GH	R	D1 - 442	D1 - 442	D2 - 442
Swing weight - Gross weight (g)	S	D2 - 446	D2 - 446	D3 - 447

TL51P

BLADE PUTTER

Shaft type: Steel
Origin: Made in Japan
Length: 34"



TL52P

MALLET PUTTER

Shaft type: Steel
Origin: Made in Japan
Length: 34"



Milled Mild-Forged Iron x Tungsten

Tungsten parts have been fused with a milled head and designed for an excellent feel through the impact, a high degree of accuracy and an exceptionally beautiful finishing, in the pursuit of an even greater functionality.

- Head material: Mild steel (body) + Soft Stainless SUS304 (face) + Tungsten (sole)
- Manufacturing process : CNC-milled mild-forged iron
- Finish: Gloss Nickel Platinum-Colored Finish
Gloss Nickel Black Finish
- Emblem colors : Gold / Black / Red
- Shaft: Original Steel
- Length: 34 inches
- Made in Japan

Headcover included: Black



ACCESS

SORRIES

TL51CB

CART BAG



Fabric: 100% Synthetic leather
Origin: Made in China
Sizes: 9 inch - 47 inch
Colours: White/Orange - White/Red
Weight: aprx. 5,5 kg

Remarks:

Full open pocket	With nylon mesh rim	3-point shoulder strap	Equipped with a separator	Shoe pocket
------------------	---------------------	------------------------	---------------------------	-------------

Tour model golf bag manufactured with synthetic leather. It can be used on golf cart or trolley. It is characterized by: 7 pockets, 1 pocket for shoes, 1 pocket lined with soft fabric for valuables objects, 2 cup-holder compartments, 1 umbrella-holder, 5 separators with protection for the shafts. It has a comfortable 3-point strap and a special rain cover.



TL52CB

STAND BAG



Fabric: 100% Nylon
Origin: Made in China
Sizes: 8,5 inch - 47 inch
Colours: Sax
Weight: aprx. 2,7 kg

Remarks:

Full open pocket	With nylon mesh rim	Light weight	Equipped with a separator
------------------	---------------------	--------------	---------------------------

Stand model golf bag in blue sky/black/white with argyle pattern, in nylon. Very light, it can be carried on the shoulders, golf cart or trolley. It is characterized by: 6 pockets, a tripod with automatic opening for ground support, one pocket lined with soft fabric for valuables objects, 7 internal separators with protection for the shafts. It has a comfortable double shoulder strap with three anchored points and a special rain cover.



TL51BB

BOSTON BAG



Fabric: 100% Synthetic leather
Origin: Made in China
Sizes: 46x23x27 cm
Colours: White/Orange - White/Red
Weight: aprx. 0,8 kg

Remarks:

Shoe
pocket

Boston bag manufactured with synthetic leather. Practical, trendy and multi-functional, it is useful for both golf, gym or for a weekend trip. It has a special pocket for the shoes and a shoulder strap.





TL61BB

LUXURY LEATHER BOSTON BAG



Fabric: 100% Calf Italian leather
Origin: Made in Italy
Sizes: 46x23x27 cm
Colours: Black - Brown - Red
Weight: aprx. 1 kg

Remarks:

Shoe
pocket

Luxury Boston Bag made with the finest calf Italian leather with ostrich finish. Totally manufactured in Italy for the highest quality. Perfect for a day tip or a weekend with style, it has 4 pockets, including a waterproof one for shoes, leather shoulder strap, Tonino Lamborghini internal lining, leather bag tag and zipper pulls with logo.





Tommaso Lombardi

TL51HC

WOOD HEADCOVER

Fabric: 100% Synthetic leather
Origin: Made in China
Sizes: Drive up to 460 cc heads
Fairway & Utility with velcro numbers
Colours: Orange - Red - Black



TL51PC

PUTTER HEADCOVER

Fabric: 100% Synthetic leather
Origin: Made in China
Colours: Black
Closure: Magnetic



TL51GL

LEATHER GLOVES

Fabric: Palm: Sheep Leather / Syntetic Leather
Back: Syntetic Leather
Origin: Made Indonesia
Sizes: 23 - 24 - 25 - 26 cm
Colours: White



TW-G1 GOLF BALL



Superb spin performance and carry distance controlled by the Spirited gear.

The highest level of spin performance and controllability.

The synergy effect realized by the soft-cast urethane cover, that boasts the excellent performance, and the highly-elastic ionomer, ensures the highest-level spin performance and the controllability just as imagined!

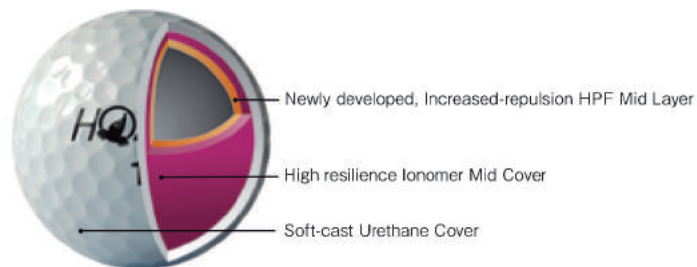
Soft feeling from the driver to the putter.

Adoption of the newly-developed high resilience core gives a soft feeling at the time of full swing. In the short game, you will feel the soft hit, thanks to the effect of the soft urethane cover.

Stable carry distance realized by large-diameter dimples.

The 336 large-diameter dimples realize a stable high-trajectory and a long carry.

By inserting the newly developed, high resilience HPF mid layer between the core and the high resilience ionomer mid cover, the enhanced spin performance and the soft feeling are simultaneously realized and the high-bouncing performance as well.



TW-G1X GOLF BALL



Advanced carry distance realized by the Spirited gear and spin performance.

Extraordinary carry distance.

The development of the large-capacity, increased propulsion core realized the high initial velocity and low spin. The result is the extraordinary straight-line stability and the carry distance.

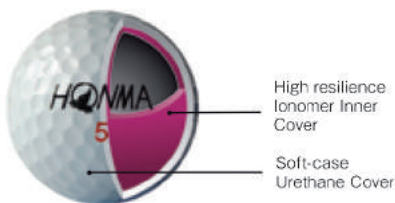
Stable spin performance.

The adoption of the soft-cast urethane cover, that boasts the outstanding spin performance, enables the stable spin performance in every aspect of golfing.

The trajectory that is optimum for longer carry distance.

The combined use of the large-diameter 318 dimples and the large-capacity increased propulsion core controls the flight and realizes the optimum trajectory that can withstand the wind.

By inserting the newly developed, high resilience ionomer inner cover between the core and the outer cover, the overspin of ball can successfully be controlled at the time of full swing, thereby preventing achieving the powerful trajectory that can withstand the blow-up of ball.





Tonino Lamborghini

GOLF

OFFICIAL LICENSEE
PRODUCT DISTRIBUTED BY:

GOLF@360 srl
Via Eugenio Montale, 1/B - 22070 Bulgarograsso (CO)
Phone: +39 347 1540751 - Fax: +39 031 9349210
www.lamborghini-golf.com - info@golf360.it

UNDER LICENSE OF:

TONINO LAMBORGHINI S.p.A.
Via Funo, 41 - 40050 Funo (BO) - Italy
Phone: +39 051 862628 - Fax: +39 051 864956
www.lamborghini.it - info@lamborghini.it